

E501/4 Banilung St, Rosebery, NSW 2018

Sold - \$760,000

Apartment 2  2  1 



Two Bedroom Apartment on Level 5

This apartment is situated in the "Vogue" building and features:

- Tiled open plan living space opening to balcony
- Kitchen with stone benchtops & mirrored splashback, gas cooking
- Two bedrooms with built in robes, access to balcony
- Bathroom and Ensuite
- Separate internal laundry
- Ducted air conditioning
- Intercom & lift access
- Parking space & storage cage

Approximately 5km from the CBD & 1.4km (approx.) to Green Square Station and the newly completed Gunyama Park Aquatic Centre.

Open for Inspection

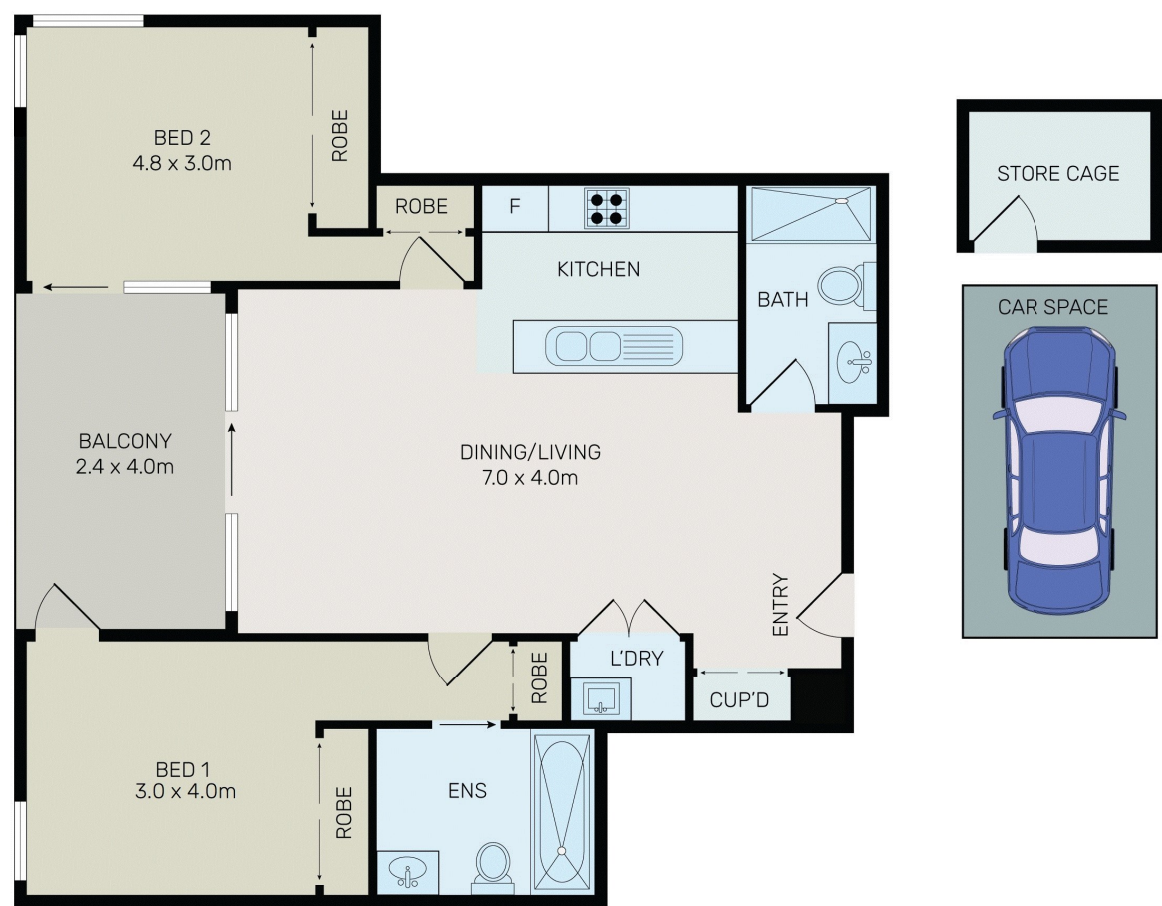
By Appointment.

Listed By
Guy Bezzina

Mobile: 0418 699 171



Floorplan



All information contained herein is gathered from all sources we believe to be reliable. However we cannot guarantee its accuracy and interested parties should rely on their own enquiries.



E501/4 Banilung Street, Rosebery