

1 Lillian St, Norville, NSW 2263

Sold - 6/06/2022

House 4 2 1



House & Council Approved Flat on Corner Block!

This is the ideal set and forget addition to your property investment portfolio occupying a coveted corner block position.

Open for Inspection

By Appointment.

A dual income property in a sought after suburb, is this neat 2 bedroom main home and well-built 2 bedroom council approved architecturally designed granny flat.

All the hard work has been done, superbly positioned within a short distance to pristine beaches, the Lake foreshore and all surrounded by restaurants and cafes in Norville, Norah Head and quick drive to Toukley Village Shopping.

The 2 bedroom main house features:

- * Separate lounge room
- * Two bedrooms plus bathroom
- * New kitchen
- * Family room that adjoins rear deck area with laundry facilities
- * Double carport with side access and private yard
- * Current rental return \$370 per week with possibility to increase at end of lease.

The architecturally designed 2 bedroom council approved flat features:

- * Separately metered.
 - * Privately fenced grounds lead and bonus single lock up garage.
 - * Open planned lounge and kitchen area.
 - * Both bedrooms with built-in robes.
 - * Modern bathroom with separate shower.
 - * Laundry with extra toilet.
 - * Current rental return \$350 per week with possibility to increase at end of lease.
- These properties would make for the ideal investment to add to your portfolio, call Justin or Belinda for more information

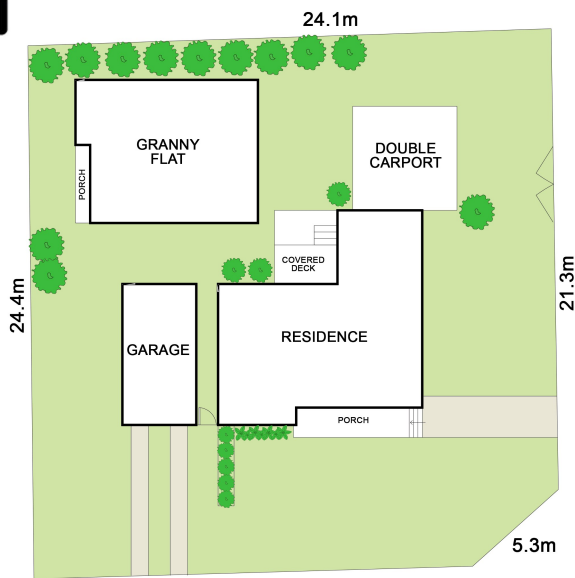
Listed By

Trevor McDougall
Phone: (02) 4389 1722
Mobile: 0410 491 755

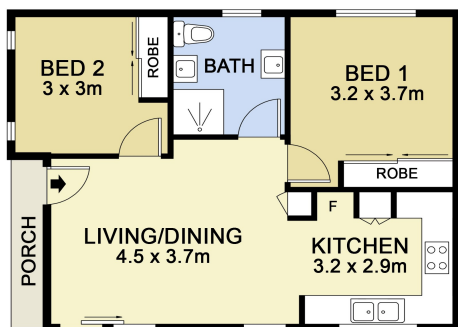
Belinda Bond



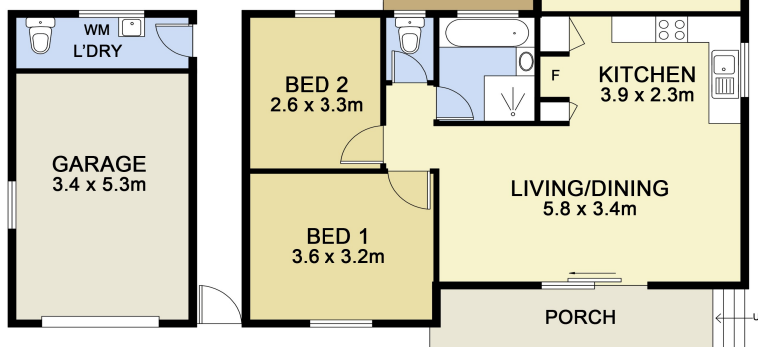
Floorplan



SITE PLAN



GRANNY FLAT



Scale in metres. Indicative only. Dimensions are approximate. All information contained herein is gathered from sources we believe to be reliable. However we cannot guarantee its accuracy and interested persons should rely on their own enquiries

INT : 91m²
EXT : 39m² NOT TO SCALE
GRANNY FLAT : 55m²

1 Lillian Street, Noraville