

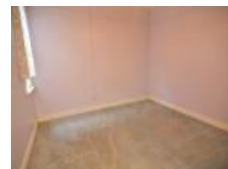


33 Spooner St, Lithgow, NSW 2790

Leased - \$270

Duplex 2  1 



RIGHT IN THE HEART OF TOWN

Conveniently located on 150 metres from Lithgow Main Street & Train Station, this character double brick semi is an easy care property in a great position.

The single fronted design offers 2 large bedrooms, lounge room with gas heater, a neat eat-in kitchen with gas stove, a neat bathroom, and a sunny front porch.

A low maintenance courtyard with rear lane access completes the picture.

Open for Inspection

By Appointment.

TO APPLY;

<https://rentals.tenapp.com.au/ljhookerlithgow>

Listed By

Lynette DeLosa

Phone: (02) 6351 2548

Mobile: 0438 696 291

