

58/110 Alfred St, Milsons Point, NSW 2061

Leased - \$1550 per Week

Apartment 3  2  2 



Expensive water views

Perfectly positioned at the rear of the "North Harbour" building, this expensive blue-ribbon area is surrounded by Harbour bridge views and Lavender Bay views.

Set amongst the vibrant social community of Milsons Point & Kirribilli. Just minutes to the centre of Sydney, this is the ultimate lifestyle.

Features include:

Spacious open-plan living and dining areas opening onto the terrace with water views to harbour bridge and lavender bay.

2 bedrooms + Study/third bedroom, all with built in wardrobes.

All rooms have water views.

All rooms have access to the entertainer's terrace with harbour bridge and lavender bay views.

Open-plan granite kitchen with Stainless steel appliances, dishwasher and microwave.

Large ensuite with spa bath and shower + 2nd guest bathroom.

Reverse cycle ducted air-conditioning system.

Internal laundry & Linen cupboard.

Building has video security intercom.

Security parking for 2 cars with lift access.

Private & quiet location.

NBN connectivity.

Easy walk to Milsons Point station, buses, ferry, Harbour bridge walkway, North Sydney Olympic pool, Kirribilli village, vibrant cafes, restaurants & shops.

Sorry, NO PETS.

Please send text message or call Ros on 0419 694 172 to arrange an appointment.

Open for Inspection

By Appointment.

Property Features

- Water views to Harbour Bridge & Lavender Bay
- Open-plan living to the entertainer's terrace
- Reverse cycle air-conditioning system
- NBN connectivity
- Security building with secure parking for 2 cars.
- Walk to trains, buses & Ferry.

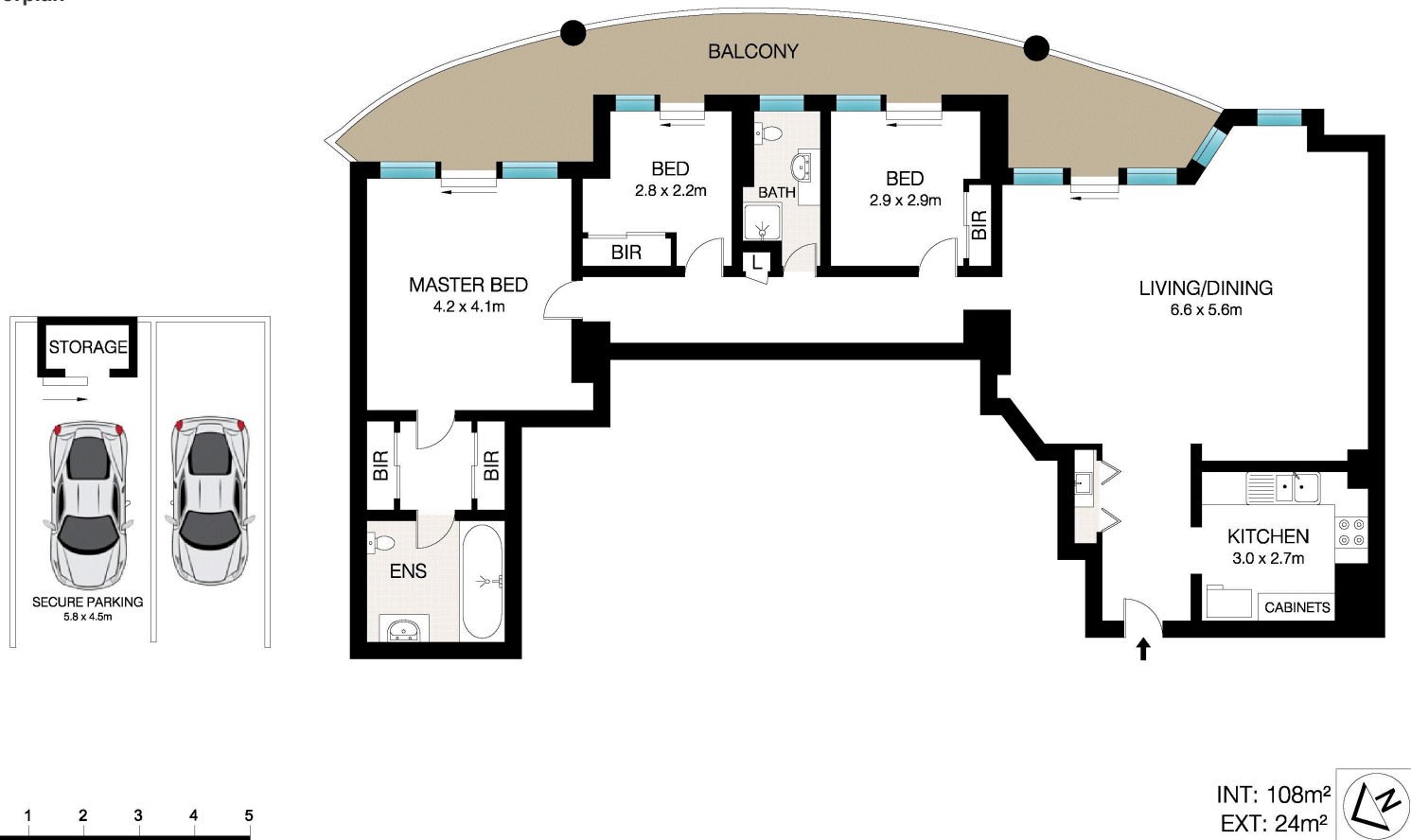
Listed By

Rosalind Oey

Mobile: 0419 694 172



Floorplan



This Floor Plan was prepared by WWW.CRYINGOUTLOUD.COM.AU for illustration purposes only. This document does not constitute any part of an offer or contract. Dimensions are approximate only. Copyright © 2018 Crying Out Loud. All Rights Reserved.

58/110 Alfred Street, South Milsons Point