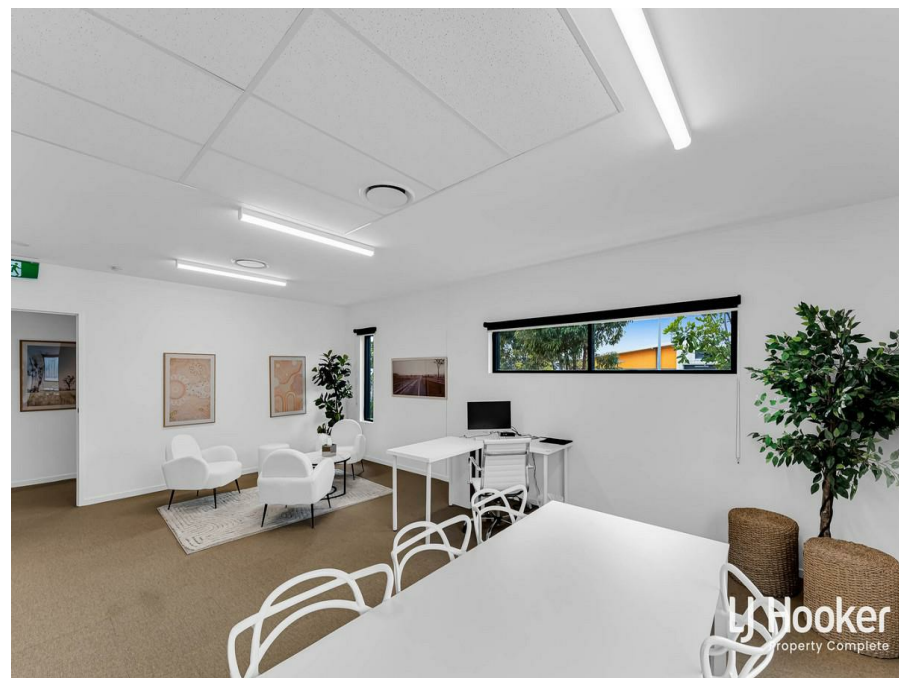


3/55-61 Adler Cct, Yarrabilba, QLD 4207

\$3,813.33 p/m

Retail Shop



Location is Key! Fitted Out 101m2 Office Space

Looking for the perfect location to take your business to the next level? Want office set up without having to have set up cost? Wanting high visibility Location ? This one ticks all the boxes

Open for Inspection

By Appointment.

Located on the corner of Wongawallen Dive and Adler Cct, across from the new Yarrabilba Tavern and the new Medical Centre

Key Features:

- 101m2 of Prime Office Space ? Near New Fit Out
- Two Executive Office Rooms
- Expansive Meeting Room
- Inviting Reception Foyer
- Use of complex amenities

Features include -

- 2 car spaces
- Positioned on the corner of the complex with street visibility
- Use of complex amenities

Yarrabilba is the perfect combination of suburban living surrounded by rural retreats and natural parklands. This family friendly and community minded master planned development is Ideally positioned between Brisbane's CBD and the Gold Coast, and on the doorstep to stunning Mt Tamborine.

A new generation community ready for you to grow your business, this vibrant community runs many annual events including the Yarrabilba Park Run, Annual Halloween Event, Christmas Carols in the Parklands, and the popular monthly Mingle Markets in Darling Parklands.

Everything you want in life is already within reach at Yarrabilba, with over 12,000 residents this bustling community is home to a variety of cafes, shops, schools, parks and community facilities, and offers local jobs, 5 schools with more to come, four early learning centres, various sporting teams and 120 km of walking/cycling tracks. It's a thriving town with everything you need and a place where life is happening. It's all yours to discover and be a part of!

Listed By

Christie Smith

