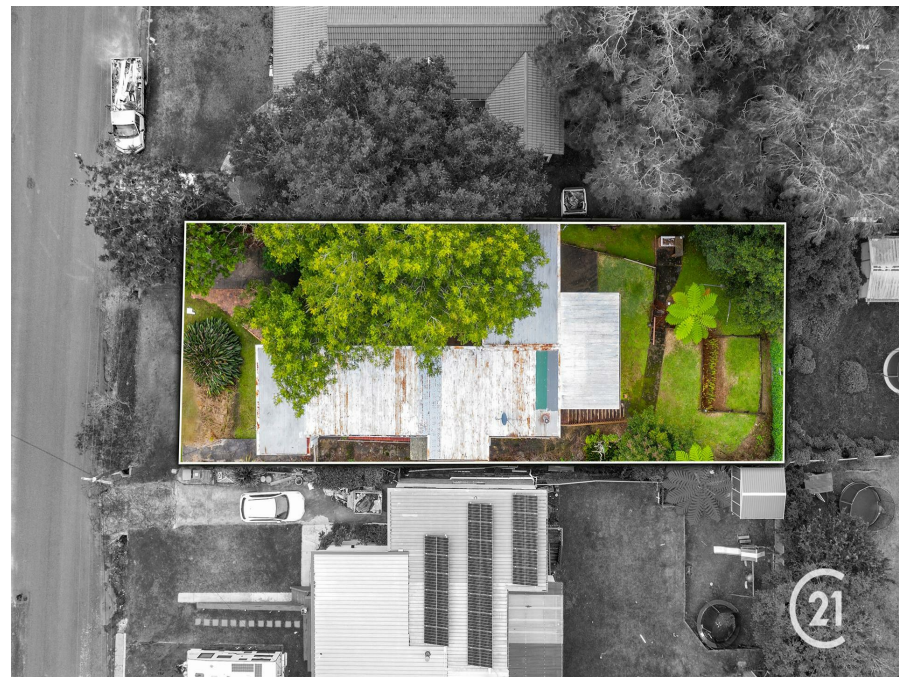


36 Platypus Rd, Berkeley Vale, NSW 2261

Sold - \$780,000

House 3 1 2



Opportunity Awaits

- * Set on the high side of Berkeley Vale this property offers so much opportunity
- * A great size 626m² block of land in a sought after location
- * A neat and tidy home with an abundance of storage space and so much potential
- * Light filled, open plan living dining and kitchen area
- * Three generous sized bedrooms with an extra study or potential fourth bedroom
- * Neat and tidy kitchen with a large walk in pantry
- * Well presented bathroom
- * Polished floorboards throughout the home
- * Fantastic enclosed outdoor entertaining area leading out from the living area
- * Loads of storage space and a large enclosed area underneath the home
- * There is so much opportunity on offer here to secure this property and make it your dream home
- * Ideally situated within a short stroll to the lake, local shops, transport and schools

Council Rates \$31.50 Per Week

Water Rates \$13.00 Per Week

Rental Return \$550.00 Per Week

All information (including but not limited to the property area, floor size, price, address and general property description) on the Website is provided as a convenience to you, and has been provided to Century 21 Coast Property by third parties.

Open for Inspection

By Appointment.

Listed By

The Office

Phone: (02) 4333 8333

The Office

Phone: (02) 4333 8333



Floorplan



36 Platypus Road, Berkeley Vale