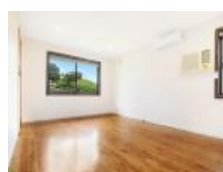


219 Northcliffe Dr, Berkeley, NSW 2506

Sold - \$710,000

House 3  1  1 



The Ideal Investment - Granny Flat Potential (STCA)

Positioned within walking distance to Lake Illawarra, schools, shops, public transport and only a short drive to Warrawong Plaza with easy access to the freeway and approximately 10 minutes drive to Wollongong CBD.

The property features three generous sized bedrooms, combined kitchen and dining, separate living area with reverse cycle air conditioning, main bathroom and internal laundry and a large backyard with detached single garage.

Situated on 622m2 block with a 15m frontage and side access, providing great opportunity to add a granny flat or second dwelling (STCA)

Ideal for the first home buyer, downsizer or savvy investor.

Features:

- Three generous sized bedrooms
- Combined kitchen and dining
- Separate living area with reverse cycle air conditioning
- Main bathroom and internal laundry
- Large backyard with detached single garage
- Block size 622m2, 15m frontage and side access
- Opportunity to add a granny flat or second dwelling (STCA)

Open for Inspection

By Appointment.

Listed By

Anthony Sorace

Mobile: 0413 690 459

