


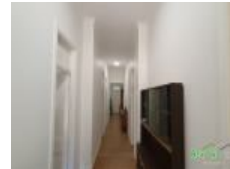


137 Warren Rd, Gilgandra, NSW 2827

Sold - 9/09/2022

House 4  2  2 



Lovingly Renovated

This northern facing Farmhouse affectionately known as 'Aralee', built in the 20's oozes character, featuring wrap around verandahs (enclosed on west side).

Lovingly renovated internally this property has 4 large bedrooms, the main boasting an ensuite and walk in robe.

The Kitchen is modern and well equipped with a spacious separate lounge/dining.

With floating timber floors throughout and neutral colours, this property is modern and bright. A fantastically wide hallway is front and centre of this large family home.

Situated on 5 acres, the property is secluded and surrounded by established trees and shrubs. External improvements would complete this farmhouse and restore it to its former grandeur.

Potential buyers should take all steps necessary to satisfy themselves regarding the information contained herein.

Open for Inspection

By Appointment.

Listed By

Katherine Gaff

Mobile: 0448 372 827

