

58 Myleema Rd, Mount Archer, QLD 4514

Sold - \$692,000

House 3  1  4 



SMALL ACREAGE BLISS

2.3 acres with a fully renovated home and sensational northerly view as far as the eye can see encompassing the Glasshouse Mtns.

Open planned living with stylish chefs kitchen including brand new dual fuel oven/cooktop

9x6m insulated colorbond shed with 6x6m high clearance awning/carport

Large alfresco deck makes the ideal stage to entertain or just the morning coffee

Woodfire heater for those cold winter nights and reverse cycle A/C for the balmy summers

3 bedrooms (2 with built-in-robies) master has personal access door to the veranda

Downstairs sitting/storage or spa area with concrete floor, TV (for sports) + beer fridge

Dedicated laundry with direct access to the clothes line, separate toilet

Dog proof house yard, fenced boundaries - 2 main paddocks, dam, steel horse stables

Fertile scrub soil, improved pasture including Rhodes grass and creeping blue grass

Just minutes to the local boat ramp into Somerset Dam and the Stanley River

School bus pick-up, bin service, rainwater only (free), mains power connected plus a back to grid solar system

Open for Inspection

By Appointment.

This property is being sold without a price and therefore a price guide can not be provided. The website may have filtered the property into a price bracket for website functionality purposes.

Listed By

Mark Cheney

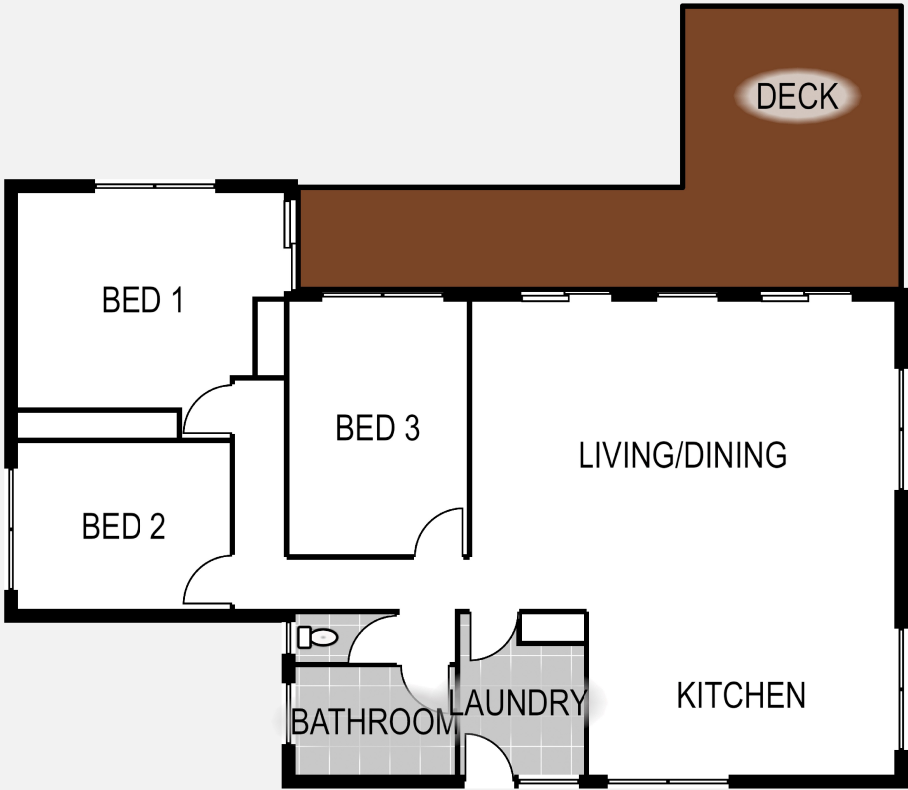
Phone: (07) 3888 1511

Mobile: 0409 876 778



Floorplan

Disclaimer: Please note this floor plan is for marketing purposes and is to be used as a guide only.



58 Myleema Road, MOUNT ARCHER
Chris Wease - 0427 536 725

