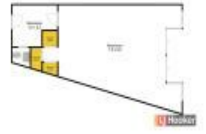


## 1 Carpenter St, Lakes Entrance, VIC 3909

Retail Shop

**\$18,000 plus outgoings (inc GST)  
per ann**



### In the heart of Lakes Entrance

Ideally situated in the heart of Lakes Entrance with a corner location, this site offers excellent exposure for passing highway traffic and holidaymakers and would suit varied business types.

Included is:

- On-site carpark as well as great customer parking along Carpenter Street.
- Perfect space for a retail store with a change room, staff room and toilet, or alternatively it has also been the site of a successful consulting firm.
- Long lease available.

### Open for Inspection

By Appointment.

### Listed By

LJ Hooker Metung

