



158 Hubert St, East Victoria Park, WA 6101

Sold - 10/01/2022

House 3  2 



CHARMING CHARACTER COTTAGE IN GREAT PROXIMITY

EXPRESSIONS OF INTEREST - CLOSING DATE: TUESDAY 30 NOVEMBER @ 5 PM

Classic high ceilings, beautiful solid wood flooring throughout with glorious leadlight windows, traditional ceiling roses, & wide cornices, this traditional weatherboard home offers you the best of two worlds. Perfectly blended with traditional and modern, immaculately maintained, and ready to move in, you are sure to fall in love with the natural charm that this home oozes

FEATURES:

- * Built-in 1936 - and has certainly stood the test of time
- * Street front with lovely front garden set on a 414sqm block
- * Undercover front entrance on a decked veranda - great for all seasons
- * Huge entrance hall
- * Bedroom 1 is huge in size with a high ceiling, mirrored built-in robe, and ceiling fan plus split system air conditioning with spacious en-suite that has a shower, hand basin, and toilet
- * Master Bedroom 2 with en-suite, plenty of cupboard spaces, and split system air conditioning
- * Family bathroom with bath, and shower over the bath and toilet
- * Bedroom 3 or 2nd lounge with cast iron gas fireplace
- * Open plan, lounge, dining, breakfast room, and kitchen with own split system air conditioning unit
- * Kitchen previously upgraded, offering you abundant storage and working spaces with dishwasher and gas cooking.
- * Separate laundry room with double door linen cupboard
- * Massive undercover decked alfresco dining with drop-down blinds for extra protection and year-round entertaining
- * Funky outdoor toilet for your guests
- * Outdoor storage shed
- * Raised decked area in the corner of the block, perfect for the afternoon tea and a read

ADDITIONAL FEATURES:

- * 414sqm block
- * Electric driveway gates to secure your cars - plenty of car spaces in front of the gate and behind the gates

Listed By

Diane Sheppard

David Lagrenade

Phone: (08) 9473 7777

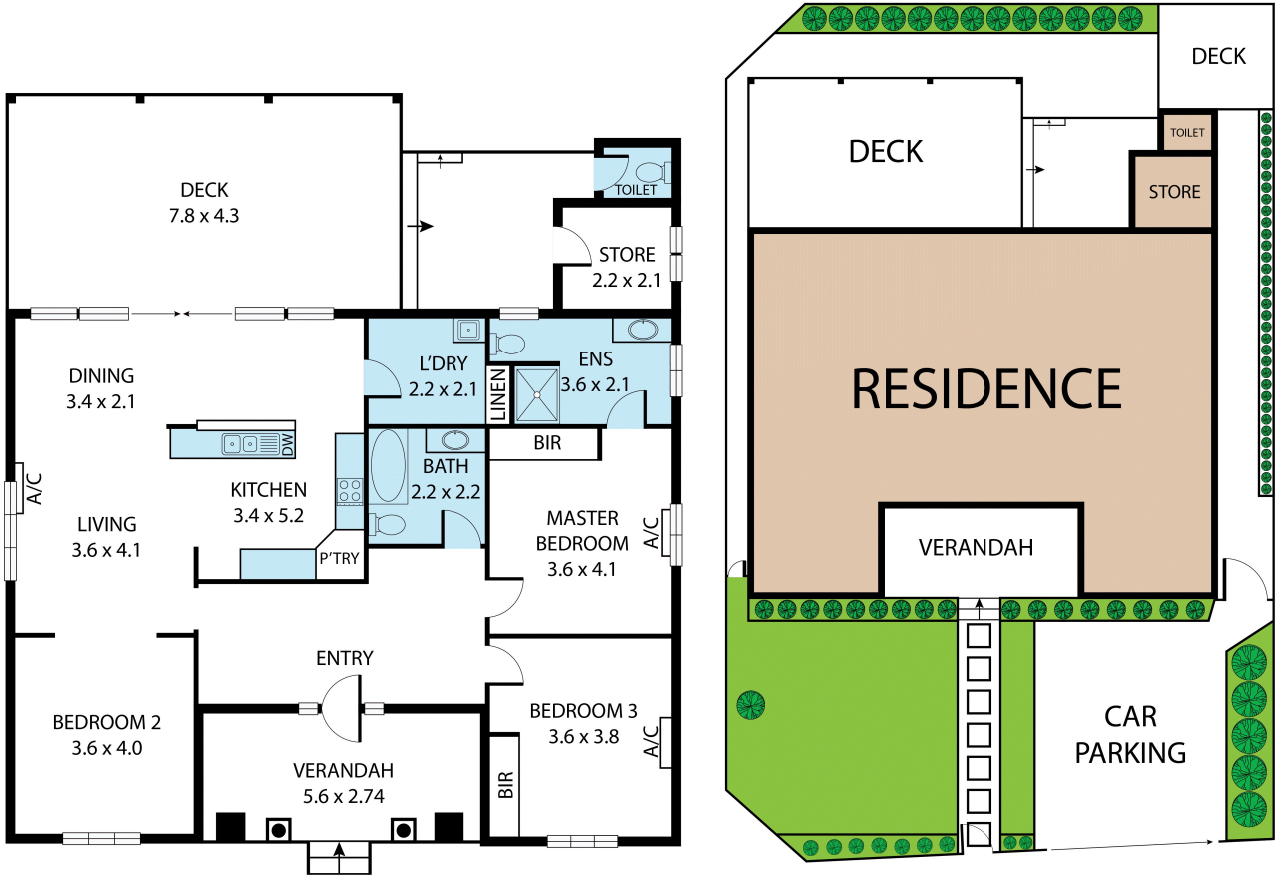
Mobile: 0417 954 984



Open for Inspection

By Appointment.

Floorplan



APPROXIMATE AREAS	
BUILT AREA :	140m ²
DECK :	33m ²
VERANDAH :	14m ²
TOTAL BUILT AREA :	187m ²

158 Hubert Street, East Victoria Park 6101

Whilst every attempt has been made to ensure the accuracy of the floor plan contained here, measurements of doors, windows, rooms and any other items are approximate and no responsibility is taken for any error, omission, or misstatement. This plan is for illustrative purposes only and should be used as such by any prospective purchaser.

LJ Hooker