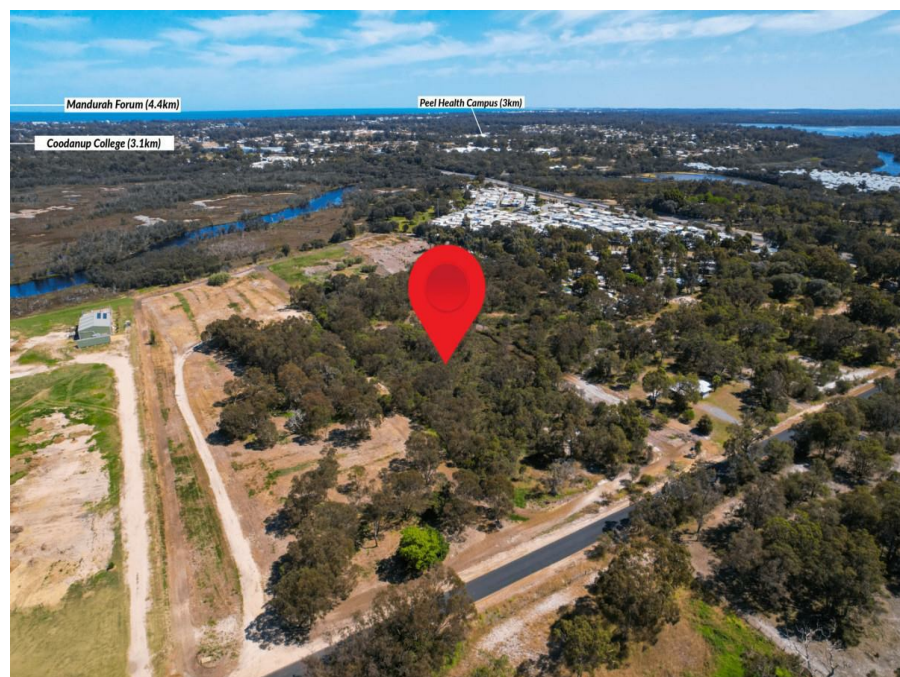


Riverside Dr, Furnissdale, WA 6209

Sold - \$295,000

Residential Land



6 Acres on the Serpentine River!

Time for a tree change?

Take a step away from the rat race with this beautiful riverside location, surrounded by nature and plenty of space for a big house, big shed, big dog and big fun for the family. All this room to breath but still only 6 minutes drive to the Mandurah CBD so you wont miss out on the advantages of the city.

The potential to create something fantastic on this block can be yours, contact Danni and Brian today.

Open for Inspection

By Appointment.

Listed By

Ramona Kaspar
Phone: (08) 9586 5555
Mobile: 0417 953 832

Ramona Kaspar
Phone: (08) 9586 5555
Mobile: 0417 953 832

