

5/144 Terralong St, Kiama, NSW 2533

Sold - \$800,000

House 2 1 1 1



## Central, sunny and elevated

Set in an elevated position with a sunny aspect lies this well-maintained townhouse offering an outstanding buying for those looking for investment, first home or possible downsize. With lovely ready-made tenants in place, there's a great opportunity to keep them on or make further plans for the new year.

### Open for Inspection

By Appointment.

Downstairs comprises of two bedrooms with large built-in robes, 3-way bathroom, separate toilet, and internal laundry. Upstairs offers spacious open-plan living/dining area which flows onto a full-length covered balcony drenched in northern sunlight with picturesque township and ocean views, as well as additional powder room and air conditioning. The kitchen has been beautifully renovated and features 40mm Caesarstone bench tops, quality appliances and plenty of cupboard space.

With a private, sunlit and tranquil courtyard, porch entry, secure lock-up garage with remote access with extensive storage and additional internal under-stair storage, this home is sure to appeal to a range of buyers. Situated right in the heart of Kiama, set back just off the main street within walking distance to everything Kiama has to offer, this home combines the ultimate low-maintenance and convenient lifestyle you have been searching for.

Please don't hesitate to call Robert Moore directly on 0402 047 414 or [robert.moore@raywhite.com](mailto:robert.moore@raywhite.com) to discuss further or secure a private viewing.

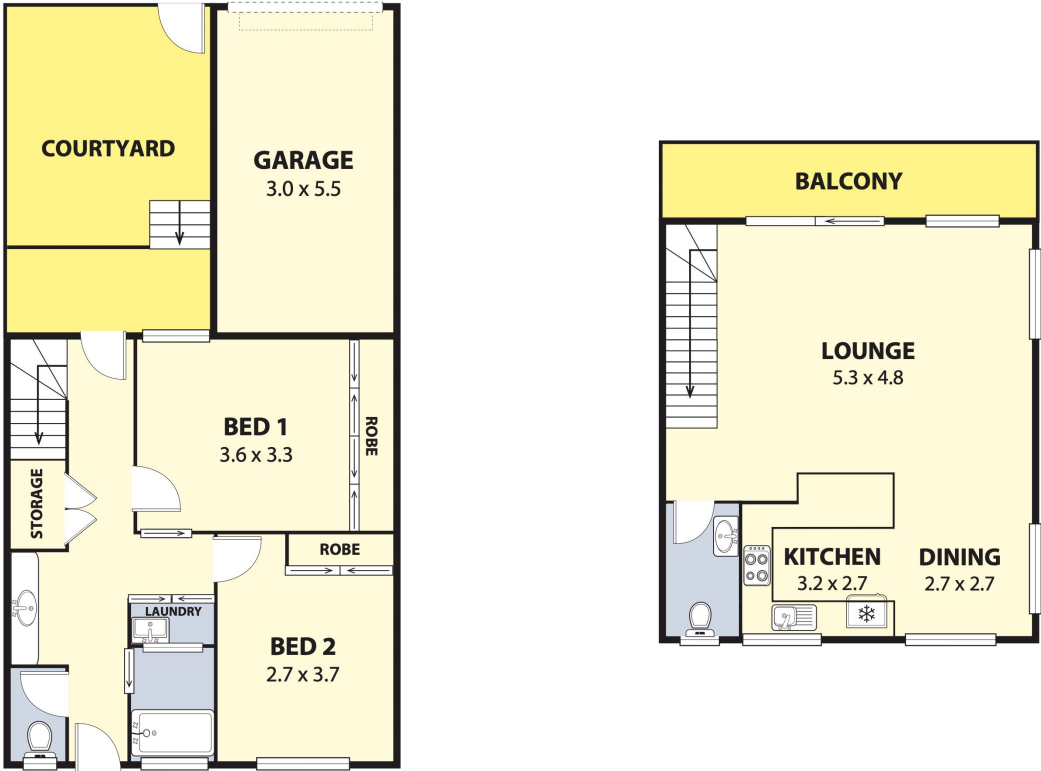
### Listed By

Robert Moore  
Phone: (02) 42323300  
Mobile: 0402 047 414

Hana Singleton  
Phone: (02) 4232 3300



Floorplan



5/144 TERRALONG ST, KIAMA

*Plans shown are for presentation purposes and are not part of any legal document or title and are subject to errors, omissions, inaccuracies and should not be used as sole and accurate reference. Particulars given are for general information only and do not constitute any representation on the part of the vendor or agent. No liability will be accepted.*



**Louka**  
wearelouka.com

Internal	91m <sup>2</sup>
Garage	17m <sup>2</sup>
Patio/Verandah	10m <sup>2</sup>
<b>TOTAL SPACE</b>	<b>118m<sup>2</sup></b>

RayWhite.