

1/28 Villa St, Annerley, QLD 4103

Sold - 13/01/2022

Unit 1  1  1 



ONE BEDROOM UNIT

1/28 Villa St, Annerley is a part of a secure complex of 12 units and is situated in a quiet yet central location, close to every convenience imaginable. A great opportunity to enter the hot Annerley real estate market.

The unit features air-conditioning, wood-look flooring and neutral tones throughout. Currently presented as an open planned studio apartment, however you could easily re-instate the wall to create a separated living/dining and bedroom.

The bathroom is completed with floor to ceiling tiles and internal laundry.

The light-filled kitchen has plenty storage, an upright gas oven & cooktop and space for a large fridge.

Complete this package with a dedicated lock up car space, with easy and secure stair access up to your unit.

A great first home to get out of the rental cycle and invest in your future; perfect investment conveniently located; or even an ideal city pad for when you are in Brisbane.

Perfectly located within 5km to the CBD; within walking distance to Annerley Woolworths, shops, gym, doctors, bus and Junction Hotel, the Junction Park Primary School ; moments to the PA Hospital, Buranda Shopping Centre, train, Green Bridge connecting to the University of QLD and other Universities; and with easy access to the Clem 7 Tunnel, M1 Motorway north and south bound ensuring work and play are never too far away. Annerley is a very central, convenient suburb that both investors and owner occupiers are finding great value.

Outgoings for 1/28 Villa St, Annerley:

- Council Rates: \$360.16 per quarter
- Body Corporate Fees: \$702.19 per quarter
- Sinking Fund Balance: \$47,072.77 as at 31/10/20

Listed By

The Office

Phone: (07) 3848 7369

Open for Inspection

By Appointment.



Floorplan

1/28 Villa Street ANNERLEY



Internal 36m²

External 2m²

Garage 15m²

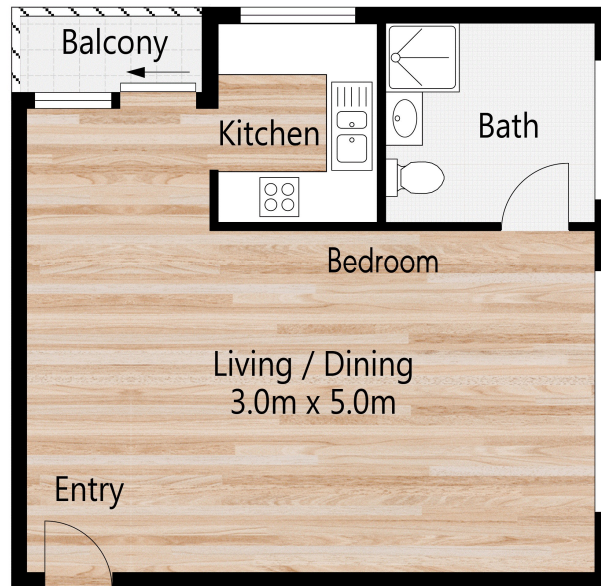
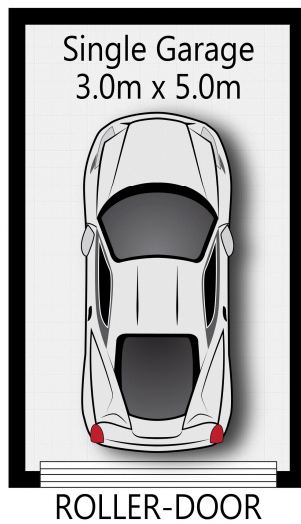
 1 Bed

 1 Bath

 1 Car



Jess Tudman | 0409 583 111
j.tudman@ljhookerproperty.com.au



DISCLAIMER | Plans are shown for marketing purposes only. All dimensions are approximate; they are subject to errors and inaccuracies and no liability will be accepted.