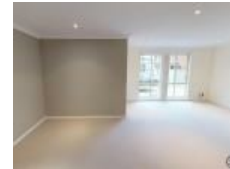


24a Spinnaker Way, Corlette, NSW 2315

Sold - \$745,000

House 3  2  2 



HIGHLY DESIREABLE SINGLE LEVEL – TENANTED TILL JUNE 20

Investors take note this is an opportunity not to be overlooked in the highly desirable suburb of Corlette, this single level family home has three (3) generous sized bedrooms plus two (2) living spaces – being a separate lounge room and a living/dining combination open plan layout integral with the kitchen. The battle axe block at 437 sqm has a double garage plus a secure space suitable for a small car, trailer, boat, or caravan. Outdoor entertaining is accommodated in the low maintenance private L-shaped yard with a covered pergola and BBQ area. Everything is at your doorstep - beachgoers it's only a short ten (10) minute walk to Roy Wood Reserve or shoppers twenty (20) minute walk to a variety of retail shops at the Salamander Centre.

Features include:

Three (3) bedrooms two with built-in robes, the Master Bedroom is king size with ensuite and walk-in robe.

Flooring is a combination of ceramic tiles and carpets to the bedrooms.

U-shaped kitchen, stone benchtops, gas cooktop, dishwashers, microwave, and electric oven with plenty of storage above & below benches and a large pantry.

Main lounge room is separate from the other rooms, spacious with plenty of natural light, serviced by a split system air conditioner.

The second living space is open plan with dining, living and kitchen and gives access to the covered pergola and outdoor entertaining area.

Main bathroom includes a shower, bathtub, and a separate toilet.

Internal laundry with external access to easily maintained L-shaped private courtyard.

Double garage with auto opener, internal access plus secure car space, rooftop Solar hot water system.

Investors note this property is leased at \$470.00 per week until the 14/06/2022.

Your inspection is essential to truly appreciate what is on offer, call Michael Kirby now on 0423 792 829 to inspect today!

Open for Inspection

By Appointment.

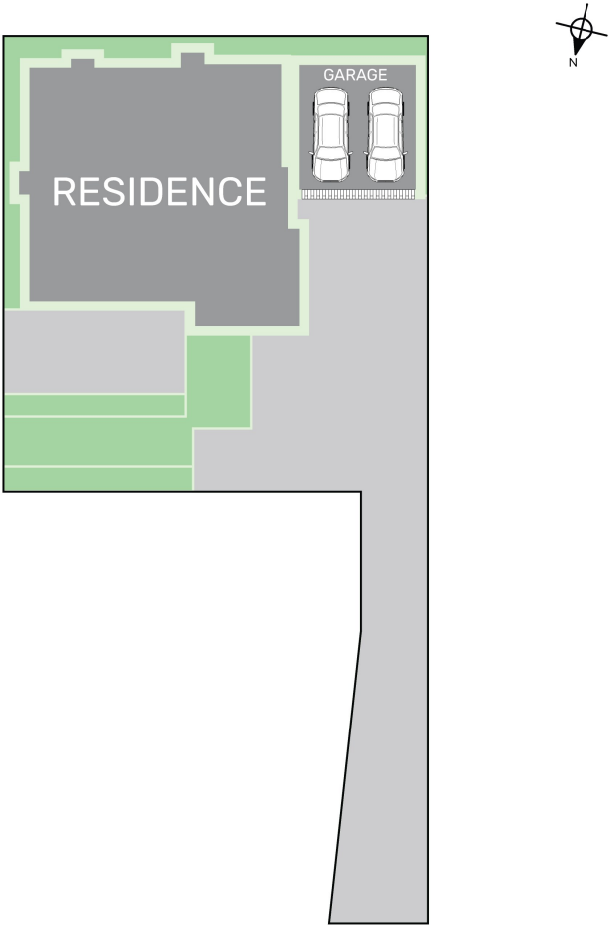
Listed By

The Office

Phone: (02) 4984 4700



Floorplan



24A Spinnaker Way, Corlette 2315
TOTAL APPROX. FLOOR AREA 125 SQ.M
Whilst every attempt has been made to ensure the accuracy of the floor plan contained here, measurements of doors, windows, rooms and any other items are approximate and no responsibility is taken for any error, omission, or misstatement. This plan is for illustrative purposes only and should be used as such by any prospective purchaser.

CENTURY 21.
Paradise Waters