
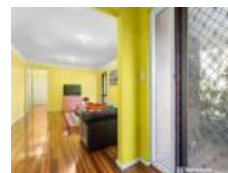



12B Tyrant Cl, Willetton, WA 6155**Sold - 22/10/2021**Duplex **3**  **1** **UNDER OFFER**

This owner occupied and much loved duplex has been beautifully renovated is now available for you to enter into the highly desirable location of Willetton on Tyrant Way.

Open for Inspection

By Appointment.

You will feel all the care and meticulous upgrades that separate this from others, with it's large multi zone living options. The spacious lounge and dining room along with the games room, compliment the exquisite and modern renovated kitchen and bathroom. Highlighted by the numerous improvements on the home plus a more than desirable size lot, you will be impressed to secure the best entry buy opportunity in Willetton!

This is ideally located on the West side of Vahland Avenue off Burrendah Boulevard which is prized location within this blue chip suburb and host of amenities including Southlands Shopping Complex, Burrendah Park and Fiona Stanley Hospital all close by.

This is ready to move in now and enjoy the benefits of your piece of Willetton...

Located in the Willetton Senior High School Zone makes this appealing 3 bedroom entry level buying in this popular suburb.

Some of the many features of this home include:

- Over 500sqm block, street front home.
- Cul-de-sac location
- Lounge and dining area
- Games room with French doors and built in bar
- Renovated kitchen with 900mm gas hotplate
- Spotted Gum wood flooring
- Renovated bathroom with separate W.C
- 3 Bedrooms all with new carpets. Master bedroom with built in robes
- 12 Solar panels
- Enclosed patio/sun room and large pergola
- Garden shed and rear yard grassed area

Listed By

Jenny Gauci

Phone: (08) 9332 5066

Mobile: 0402 940 342

