
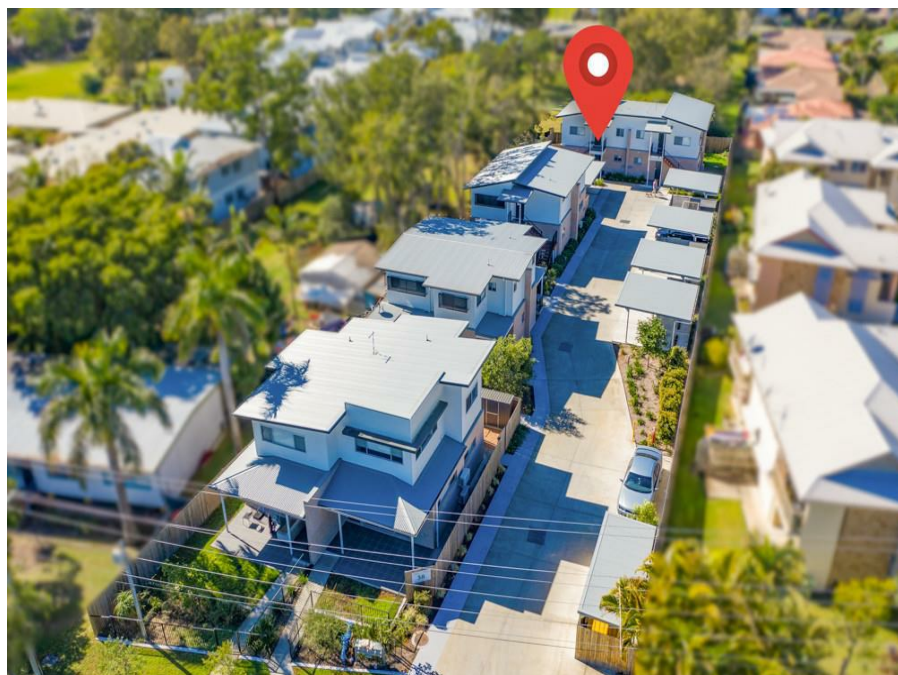


7/38 Pittwin Road South , Capalaba, QLD 4157

Sold - 15/10/2021

Unit 2   1 



MODERN & BRIGHT GROUND FLOOR UNIT - IDEAL LOCATION CLOSE TO

Located in a quiet street and positioned to capture the stunning leafy outlook is this modern ground floor 2 bedroom apartment, a perfect choice for first home buyers, investors & downsizers.

Open for Inspection

By Appointment.

The fresh, contemporary aesthetic throughout the open plan kitchen and living area creates a light-filled space, which is accompanied by natural light that flows through from the outdoor entertaining area. Here you can enjoy the best leafy views Capalaba has to offer; a great place to entertain, or simply a spot to enjoy your morning coffee.

Centrally located just moments from local schools, shopping centres, and a quick commute to the Brisbane CBD this home provides the perfect lifestyle location. Imagine enjoying the local cafes, parks, sporting clubs, boating and fishing, all a short distance away.

Property Features Include:

- * Designer Kitchen with Stainless Steel Appliances and Stone Bench-tops.
- * Open plan Living/Dining Area
- * Air-conditioning
- * Ceiling Fans in both Bedrooms
- * Undercover entertaining area
- * 1 car accommodation
- * Pets on approval
- * Storage shed
- * Only 4 years old

Don't miss this opportunity to secure this stunning property.

Listed By

The Office
Phone: (07) 3286 2500

The Office
Phone: (07) 3286 2500

