

2/488 Kaitlers Rd, Lavington, NSW 2641

Sold - \$220,000

Unit 2  1  2 



## SOLD - SETTLES 17 NOVEMBER .....Conveniently Located

SOLD - SETTLES 17 NOVEMBER .....This 2BR unit faces Storey St and is one of three on the block. Both bedrooms have large built-in robes and outside awnings. The long living area adjoins the breakfast bar. The large kitchen has a separate pantry, plenty of bench space, and an electric oven. A split system heater/cooler provides year-round comfort, whilst the garage has storage shelving fitted and internal access to the unit. The secure backyard is completely sealed and provides a great space for pot plants and an outdoor setting. A second car space is adjacent to the front porch. Nearby are a child care centre, schools, parks, and bus stops. Lavington Square Shopping Centre is 2.4km away, and the Springdale Heights Tavern and shops are 1.3km. With a good tenant already in place this unit is a walk-up start for an investor, and provides a 5.5% gross return if bought at \$217,500. Alternatively, an owner-occupier could benefit from its convenient location. Inspection By Appointment - call 0407 058 706. For more see [www.nhre.com.au](http://www.nhre.com.au). CORONA VIRUS: if you have symptoms please DO NOT visit our office or attend viewings. Instead call 02 6025 8000 to discuss your enquiry.

### Open for Inspection

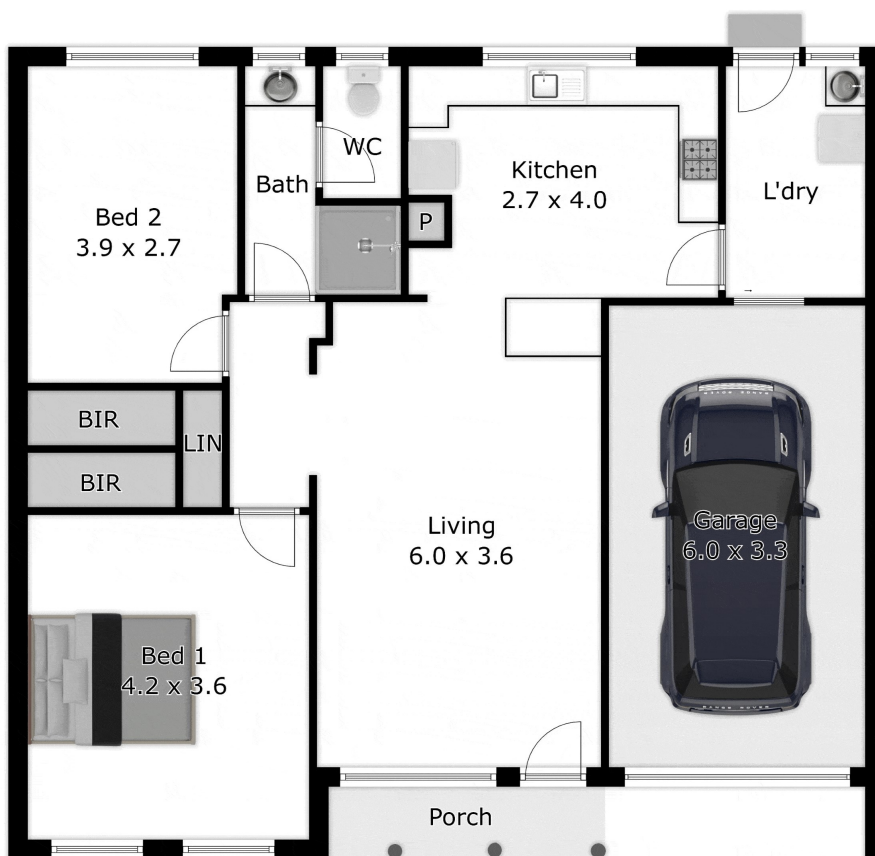
By Appointment.

### Listed By

Nigel Horne  
Phone: (02) 6025 8000  
Mobile: 0407 058 706



## Floorplan



APPROX. INTERIOR LIVING AREA  
89.7 sq. m  
Measurements are an approximate guide only.  
Not to scale.