

182 Bridge St, Uralla, NSW 2358

Sold - \$420,000

Industrial Land, Warehouse & Office 20 



PRIME INDUSTRIAL PROPERTY WITH HIGHWAY FRONTAGE

This 1874m² property is situated on the southern end of town in the light industrial area of Uralla. It adjoins the Uralla Golf Course allowing excellent promotional advertising.

The property is fully fenced and includes a 22.5m x 13m industrial steel framed shed with workshop, display area, office, bathroom, storage area and mezzanine floor. Three phase power is attached.

The property is currently leased and is showing a good return on investment.

The purchase of the adjoining property of 1791m² could be negotiated if required.

DISCLAIMER; "The above information has been supplied to us by the Vendor. We do not accept responsibility to any person for its accuracy and do no more than pass this information on. Interested parties should make and rely upon their own enquiries in order to determine whether or not this information is in fact accurate."

Open for Inspection

By Appointment.

Property Features

- New England Highway Frontage
- Large steel framed shed and workshop
- Display area

Listed By

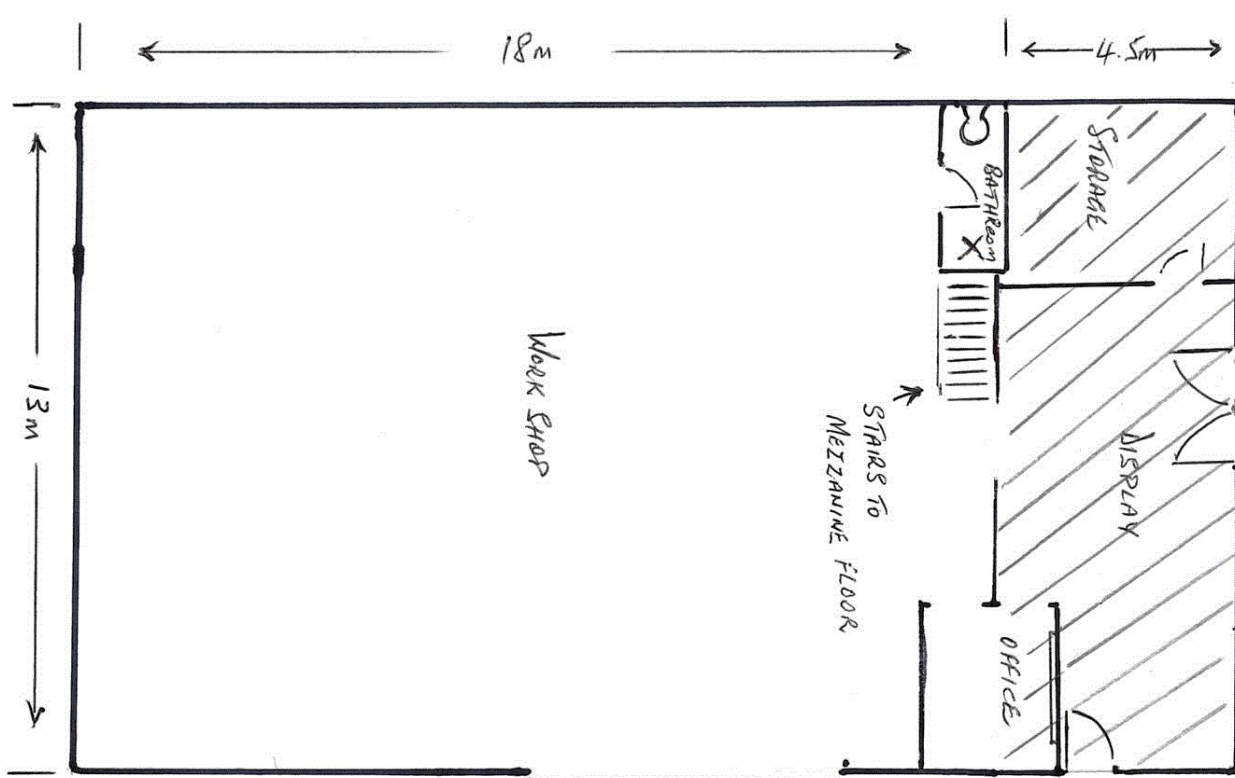
Iain Mackintosh

Phone: (02) 6778 3066

Mobile: 0416 160 180



Floorplan



178 BRIDGE STREET URALLA