

2/30 Taunton St, Annerley, QLD 4103**Sold - 11/10/2021**Unit 3  2  1 

UNDER CONTRACT

Located in the charming suburb of Annerley just 6kms from the city sits this 3-bedroom townhouse offering a great opportunity for first home buyers, professional couples, small families or investors. Perfectly elevated positioned to take full advantage of the inner-city lifestyle while still enjoying the quiet neighbourhood feel. Situated in a complex of only three townhouses, you can look forward to low maintenance, without compromising on space or style. The complex has also just undergone a fresh coat of Paint on the exterior which has enhanced its modern appearance.

Open for Inspection

By Appointment.

Presenting an open plan design, the living space is complete with timber flooring and split system air-conditioning. The modern kitchen is finished with trendy benchtops and modern stainless-steel appliances and dishwasher. Leading from the living space out to a balcony at the front that is a great place to relax and unwind.

Upstairs is fitted with revers cycle air-conditioning to 2 bedrooms, including the master bedroom which is complete with a modern ensuite and large built-in-robe. The remaining 2 bedrooms have built-in-ropes and are serviced by a modern main bathroom with shower over bath combo.

On the ground level you will find a secure lock up garage with enough space for two small cars parked tandemly. Internal laundry with an outdoor courtyard with clothesline, internal staircase and loads of storage space under the stairs.

Key features include:

- Total floorplan area of 160m2
- Large open plan living, complete with air-conditioning
- Stylish kitchen with stainless steel appliances including dishwasher
- Three spacious bedrooms
- Master bedroom featuring ensuite and large built-in robe
- Remote control skylight with blind in the second bedroom to allow for heat to escape in summer but also to block out the sun in the mornings
- Ceiling fans
- Large family bathroom with modern finish
- Private, spacious courtyard
- Secure remote controlled garage with tandem car space

Listed By

Sharon Booth

Phone: (07) 3380 0000

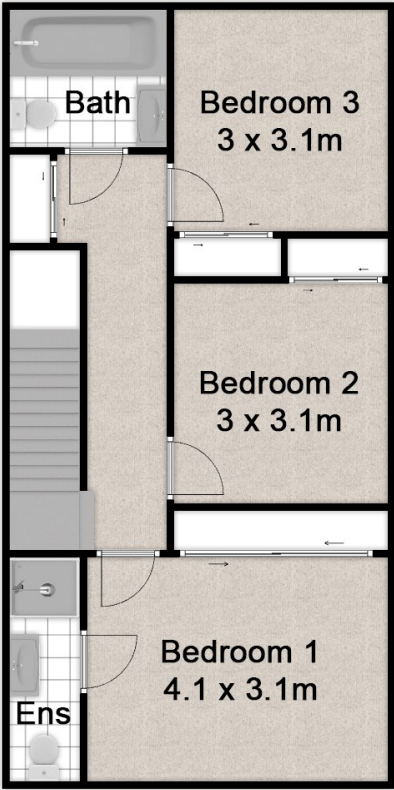
Mobile: 0411 869 792



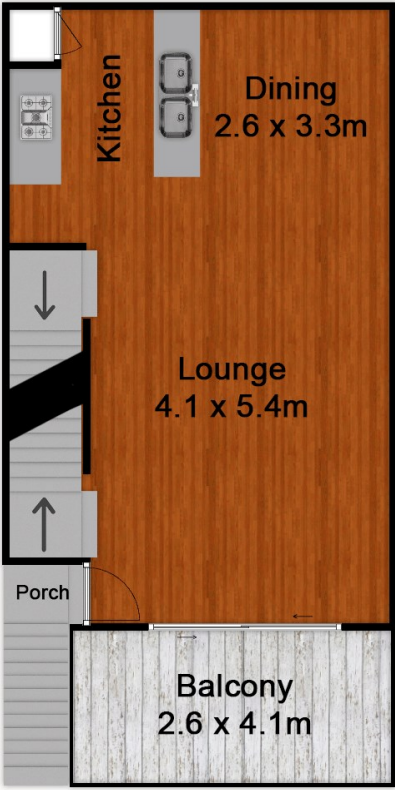
Floorplan

Unit 2/30 Taunton Street, Annerley

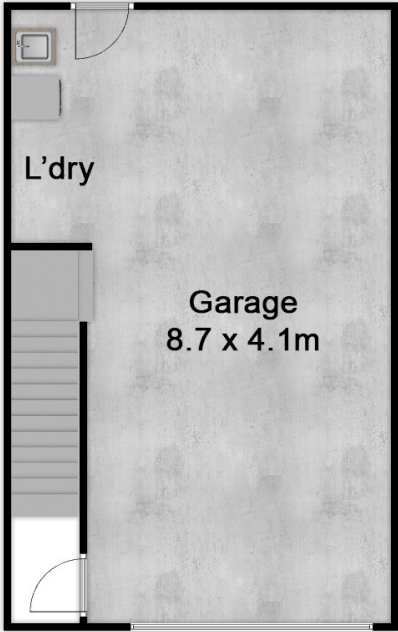
Total approximate floor area = 150m²



Second Floor



First Floor



Ground Floor

While every attempt has been made to ensure the accuracy of the floor plan contained here, measurements of doors, windows, rooms and any other items are approximate and no responsibility is taken for any error, omission or mis-statement. This plan is for illustrative purposes only and should be used as such by any prospective purchaser. The services, systems and appliances, shown have not been tested and no guarantee as to their operability or efficiency can be given.