

5/20 Simon St, Yeronga, QLD 4104

Sold - 11/08/2021

Unit 2  1  1 



SOLD BY JANE ELVIN

PERFECTLY POSITIONED

OUTGOINGS:

Brisbane City Council Rates: \$360.16/qtr

Body Corporate Levy - \$800 / qtr

Open for Inspection

By Appointment.

5/20 Simon St Yeronga offers a cavity brick unit that is part of a small block of only 5, located on the top level offering great security and privacy. Perfectly located within walking distance to the train, bus, shops and cafes yet far enough away to enjoy the serenity of the Yeronga pocket. Located in a cul-de-sac that connects directly into the park, the perfect extension of your home without the everyday maintenance.

This spacious unit has two good sized bedrooms both with built in wardrobes and the main bedroom has a private balcony ensuring good air-flow with views through to the park. The centrally positioned kitchen is located beside the designated dining with ample storage. The tiled living room offers plenty of room for the oversized lounge and TV and flows out to the back entertainment balcony with room for a BBQ and table. Complete the package with the oversized garage has room for 2 small cars and houses the laundry. You can also park outside the garage door as the garage is located at the end and does not restrict access for any of the residents.

Perfect for the owner occupier in a small tightly held complex; a great investment close to every convenience imaginable and sure to attract a quality tenant, or ideal for family with children attending University, they can jump on a train, a bus or a bike to get to Uni.

With a lovely park at the end of the street this property also enjoys a convenient location within walking distance to shops, takeaways, cafes, Yeerongpilly Green and both the train and bus; just a bike ride to the Green Bridge connecting you to the University of Queensland; with easy access to Major Hospitals, Universities, QLD Tennis Centre; Yeronga offers an outstanding lifestyle only 5km to the CBD.

Features of 5/20 Simon Street, Yeronga at a glance:

- Located at the top of the complex in a block of only 5
- Stair access to this unit does not share access with another unit on this level
- 2 good sized bedrooms both with built in robes

Listed By

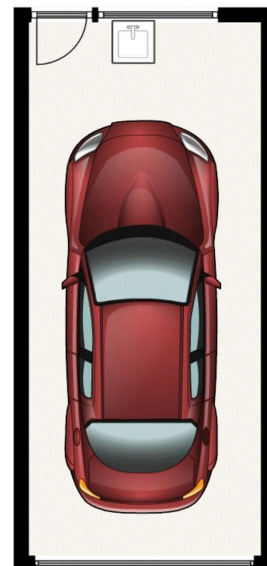
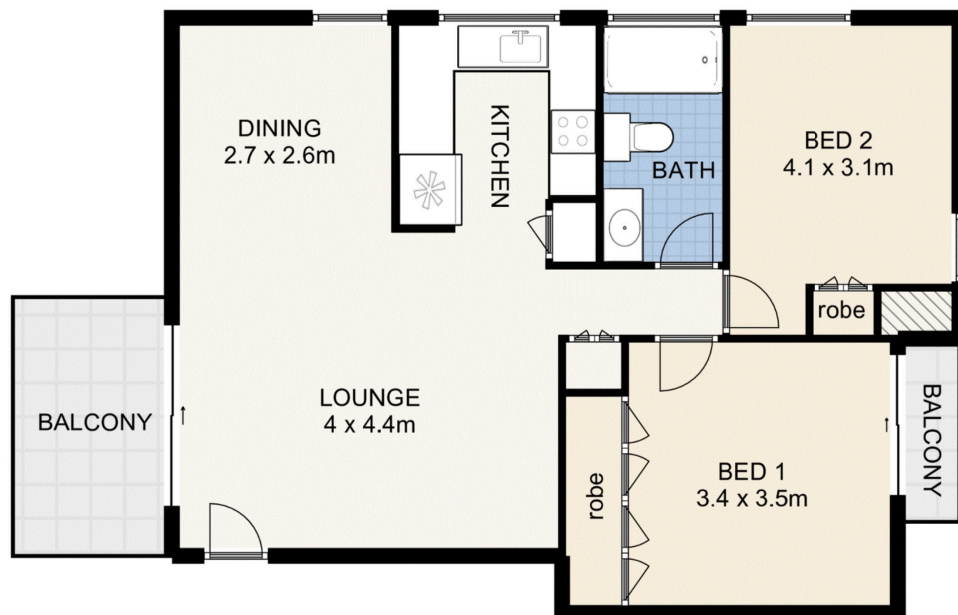
Jane Elvin

The Office

Phone: (07) 3848 7369



Floorplan



INT: 71 sqm
EXT: 8 sqm
CAR: 21 sqm
TOTAL: 100 sqm

5/20 SIMON STREET, YERONGA

This floor plan is not to scale. Areas and dimensions are approximate and therefore plan should only be used for illustrative purposes.