

325 Mount Gravatt-Capalaba Rd, Wishart, QLD 4122

Sold - 17/07/2021

House 3 2 2



SOLD BY KOS COMINO

Just gorgeous! This lovely brick lowset sits within the coveted Mansfield High Catchment and has a brand new, breathtaking interior that's been stylishly renovated from top to bottom. On an expansive 600sqm block that's been lusciously landscaped, this beautiful family home is just a stroll from buses, shops, parks, schools and close to both the Pacific and Gateway motorways as well as popular Westfield Garden City. A chic retreat, this is your chance to live a life of leisure with the utmost convenience!

Open for Inspection

By Appointment.

You'd never believe just how marvellous the interior is just by looking at this charming abode from outside. With a vast expanse of lawn out front, established shady trees, a double garage and ideal northerly outlook, this home looks like any other family-friendly sanctuary.

However, once you pass the spacious and tiled enclosed patio that's perfect for lazy afternoons, you'll step inside to an open-plan lounge and dining area that's been fashionably finished with crisp new paint and trendy floors. A generous, air-conditioned space for daily relaxation, it even adjoins a separate tiled sunroom for media viewing with rustic exposed brick walls.

It also leads directly into the stunning and luminous kitchen, which is adorned by lustrous white stone benchtops, vogueish Subway-tile splashbacks, a plethora of farmhouse-chic timber cabinetry, and a handy breakfast bar with a pair of stylish pendant lights. An enchanting gourmet's fantasy, it is completed with quality electric appliances including a raised oven and dishwasher, as well as convenient shelving.

At the end of a hard day's work, parents can tuck little ones in for the night in one of two junior bedrooms. Both with plush new carpets, ceiling fans and sliding mirrored robes, they are bright and generous. They have access to a water closet and shared bathroom with bath and shower, which has a distinct retro appeal with all new, trendy patterned floor tiles and a pair of fully lit mirrors above the double vanity.

The large, carpeted master suite offers a comfortable refuge for parents with a ceiling fan, air conditioner, sliding mirrored robes and an exquisite ensuite with a similar mod style as the shared bathroom.

Other features that will impress include:

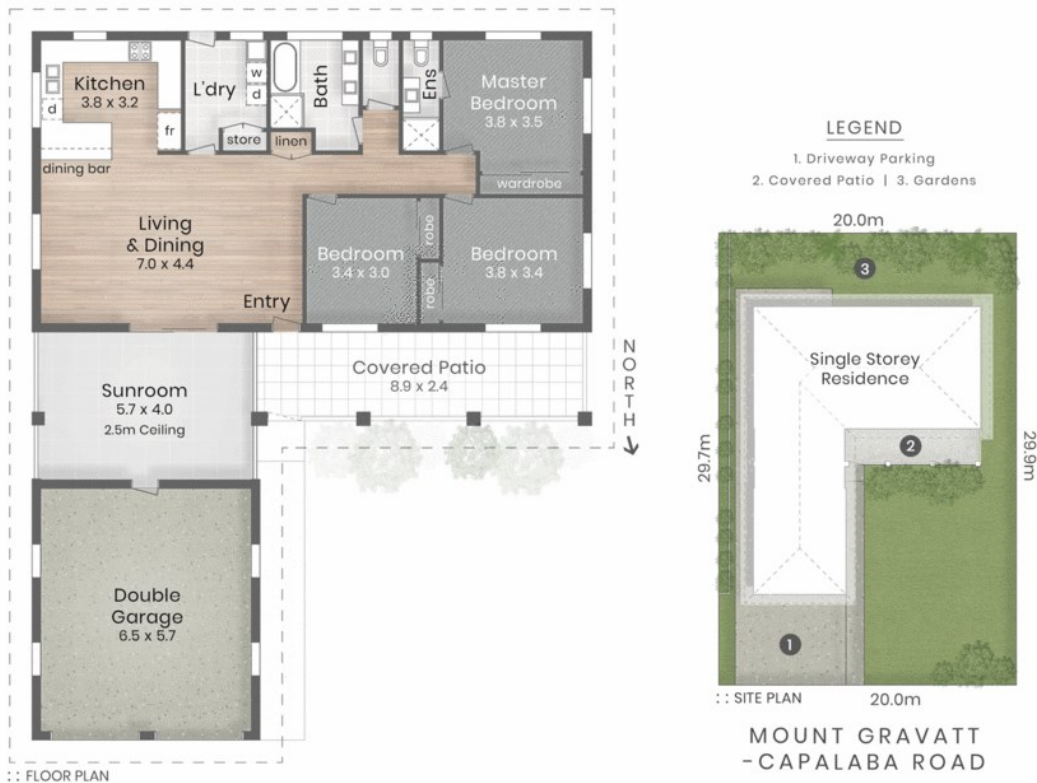
- Security screens
- Back terrace for winter fires or evening entertaining

Listed By

Peter Crowther
Phone: (07) 3344 0288
Mobile: 0411 866 008



Floorplan



325 Mount Gravatt-Capalaba Road WISHART

600m²

3 Bed

2 Bath

2 Car + 2 Off-Street

Internal 188m² | Covered Patio 21m² | Total 209m² or 22 Squares

LJ Hooker

Sunnybank Hills

No permission is given to use or alter this Floor Plan without the consent of Pure Design Concepts. The overall presentation style, layout, imagery, fonts, background, colours and terminology has been originally created by PDC and is subject to strict copyright. No ownership is taken for building design. All measurements are approximate & individuals should rely on their own information. Find out more at puredesignconcepts.com.au

puredesign

plans for purpose

Listing Number: 3178782

Every precaution has been taken to establish accuracy of the information above, but does not constitute any representation by the vendor or real estate agent.

Page 2 of 2