

**102-108 Princes Hwy, Unanderra, NSW 2526**

**Sold - 7/09/2022**

Industrial Land



## Join The Cafe Society

Become part of the Cafe Society by taking the reins to this established Cafe from the retiring owner. Serving up delicious breakfasts and lunches six days a week to loyal customers, this cafe has a strong following, built up over years by its current owner.

### Open for Inspection

By Appointment.

Located in the bustling Unanderra village, on the Princes Highway, this cafe has an large eat-in space, well-appointed kitchen facilities and ample foot traffic visiting neighbouring IMB Bank. All serviced by dedicated customer parking at rear.

There is scope to put your own stamp of the food offering to further expand the potential of this well established Cafe. This represents a great opportunity to own a space in the Cafe Society.

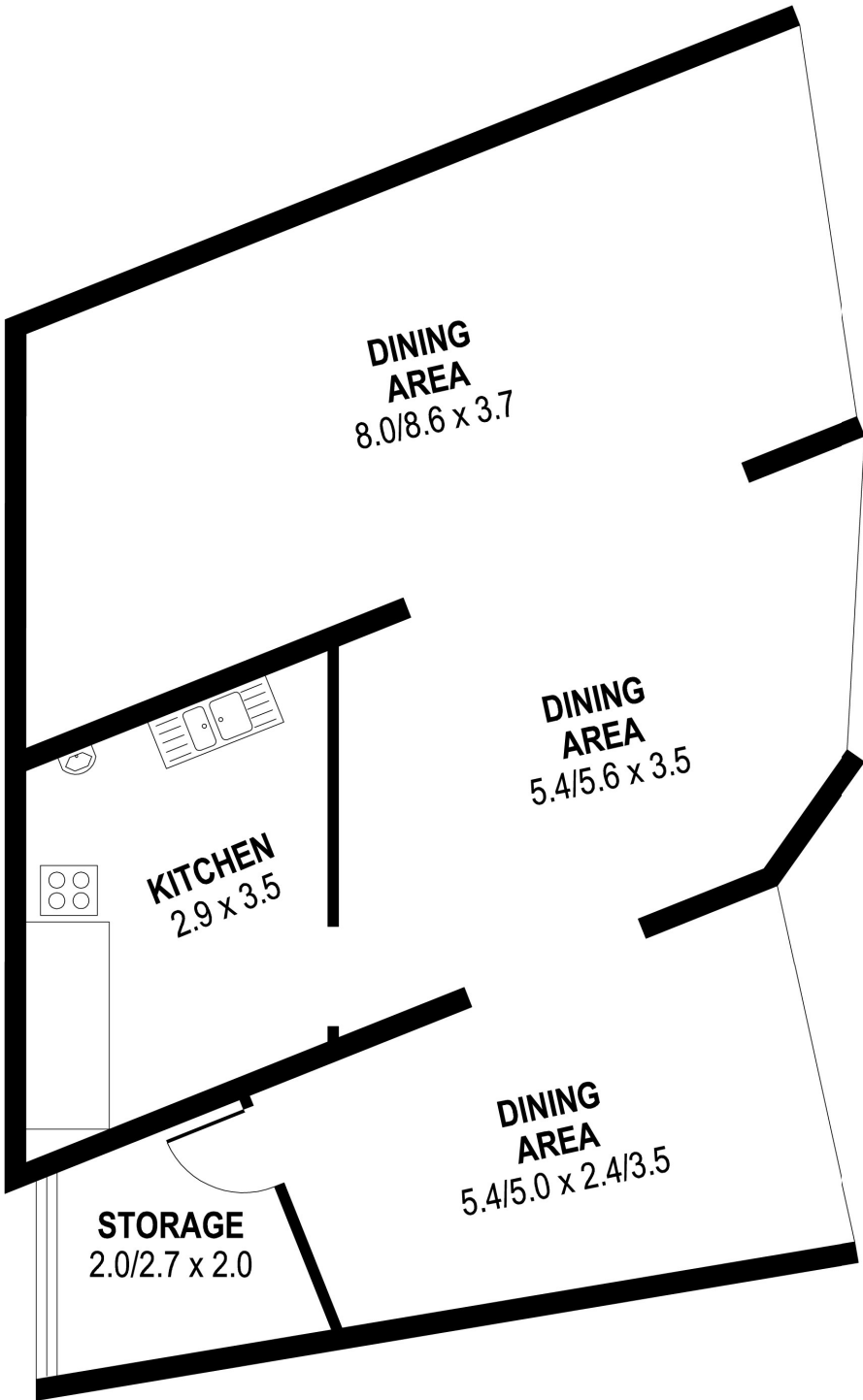
### Listed By



Chris Stylis  
Phone: (02) 4229 8600  
Mobile: 0419 211 331



Floorplan



PLANS SHOWN ONLY INDICATIVE OF LAYOUT. DIMENSIONS ARE APPROXIMATE.

INT : 84m<sup>2</sup>

102-108 PRINCES HIGHWAY

UNANDERRA