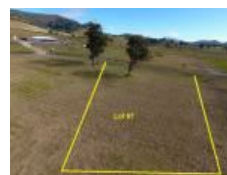


8 Dangar Rd, Gloucester, NSW 2422

Sold - \$225,000

Residential Land



Rural Residential Block

With a couple of large trees on the block, this acre lot offers the chance to make the most of the setting when you build. Looking towards the town of Gloucester to the southeast there is plenty of room for a house and shed. Services are at the front of the block and there is a choice of entry points. Probably the most elevated block still for sale in this rural residential estate.

Open for Inspection

By Appointment.

Property Features

- 4,002 sqm block
- Close to Gloucester town centre
- Elevated block
- Located in rural setting

Listed By

Peter Markey
Phone: (02) 6558 2008
Mobile: 0418 633 060

