

**66 Ethel St, Sanctuary Point, NSW 2540**

**Sold - 31/05/2021**

House 3  1  1 



## ONE BLOCK FROM THE WATER

This well designed, well loved and well maintained family home is now ready for new owners. Located only one block from the water offering water glimpses from the large covered rear deck plus lounge room and kitchen. Situated on a large block of approx. 950sqm of gentle sloping land with ample room for a granny flat or large shed to be added or enjoy the established raised veggie gardens and workshop/storage sheds. This home is loaded with character and country charm boasting a real timber kitchen, unique bathroom, plenty of storage options, combustion woodfire and ceiling fans. Situated in a popular community only around fifteen minutes drive to the beaches of Jervis Bay, close to local shops, schools and cafes.

Ideal for first home buyers, investors and retirees.

This home will be sold on AUCTION day so don't delay. Arrange your inspection today.

Call Marty on 0404 082 841 or Leaha on 0435 936 511.

### Open for Inspection

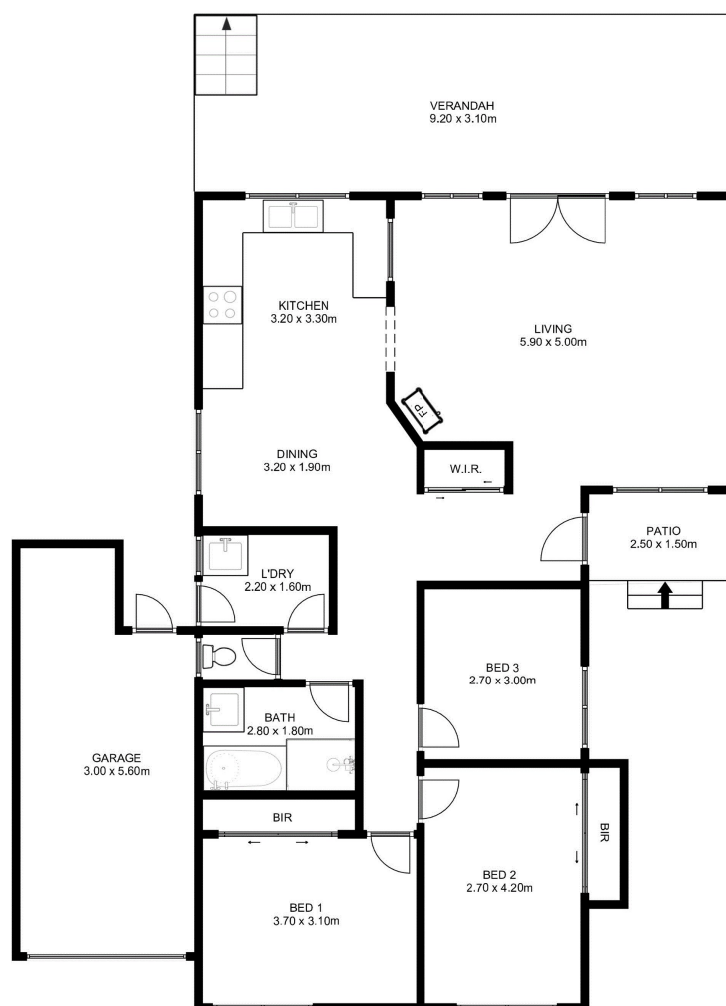
By Appointment.

**Listed By**  
Marty Stanfield

Lorraine Cook  
Phone: (02) 4443 9666  
Mobile: 0411 135 696



## Floorplan



GROUND LEVEL



### 66 ETHEL STREET, SUNCTUARY POINT

RESIDENCE AREA : 156.50 m<sup>2</sup> (APPROX INTERNAL AREA + VERANDAH + ALFRESCO AREA)

DIMENSIONS ARE APPROXIMATES ONLY & ALL INFORMATION GATHERED WE BELIEVE TO BE FROM RELIABLE SOURCES HOWEVER CAN NOT BE GUARANTEED & INTERESTED PARTIES SHOULD MAKE THEIR OWN ENQUIRIES.

