

13/49 Wilton Tce, Yeronga, QLD 4104

Sold - 16/06/2021

Unit 2  1  1 



SOLD BY JANE ELVIN

THE WOW FACTOR ON WILTON TERRACE!

13/49 Wilton Tce, Yeronga is located at the back of the complex on the top floor providing security and privacy.

Open for Inspection

By Appointment.

Offering a larger than your average two bedroom unit with a good sized open plan, air-conditioned living and dining area that flows out to a sun drenched balcony to enjoy your morning coffee. The kitchen has been updated with good storage, dishwasher and stainless appliances. A timber look flooring flows throughout the living area keeping it fresh and modern. The updated bathroom has a shower over bath, large vanity with storage under bench and overhead. The laundry has also been added to the bathroom for ease of access.

Both the oversized bedrooms are carpeted and have built-in wardrobes. The master bedroom is very spacious, air-conditioned with room also for a study desk if needed.

You are so close to everything you don't even need a car, but for those with a car the garage is oversized with plenty of room for the push bikes and extra storage. Walk across the road to the Yeronga Village Shops, Yeronga RSL, metres to the bus and train, and a bike ride to the Green Bridge connecting you to the University of QLD and Tennyson Centre. All the conveniences at your fingertips, but quietly located away from the hustle and bustle.

This property ticks all the boxes for the owner occupier or a savvy investor looking for a quality rental property. Close to Hospitals and Universities, this property would also be an ideal home for medical staff or families looking for accommodation for University-age children.

Outstanding features of 13/49 Wilton Tce Yeronga at a Glance:

- Located at the back of the block on the top floor
- 2 good sized bedrooms, both with built-ins & carpet
- Spacious, updated kitchen with dishwasher and stainless appliances
- Large open plan living and dining
- Updated bathroom with shower over bath & great storage
- Separate toilet
- Laundry in bathroom for ease of access

Listed By

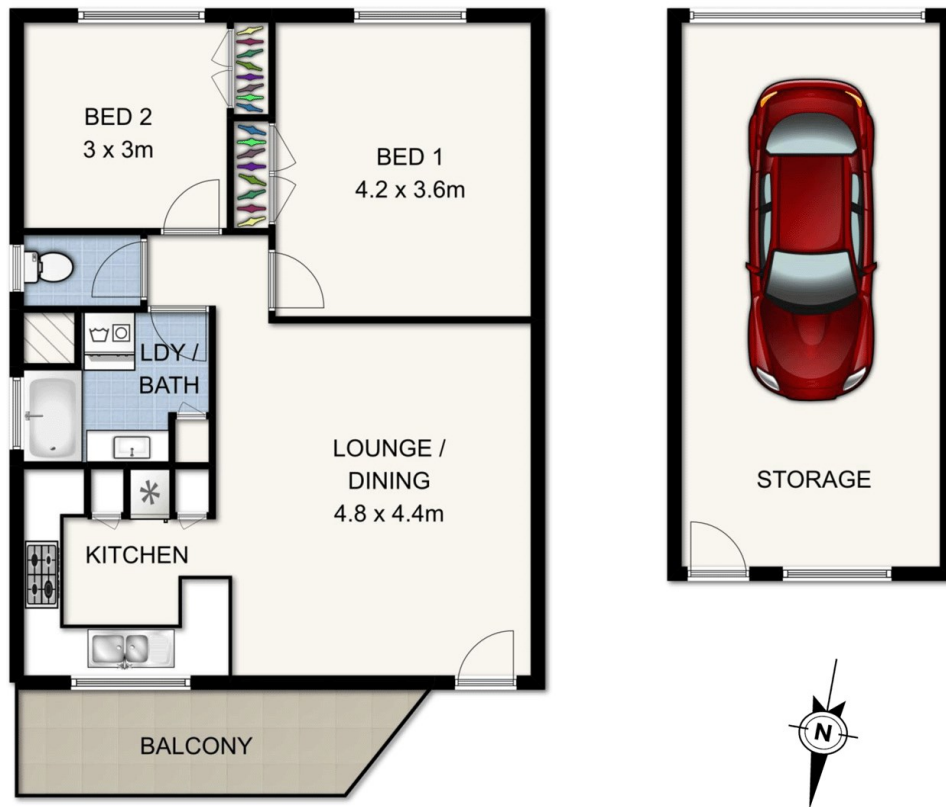
Jane Elvin

The Office

Phone: (07) 3848 7369



Floorplan



13/49 WILTON TERRACE, YERONGA

This plan is not to scale. Areas and dimensions are approximate and therefore plan should only be used for illustrative purposes. Plants are decorative only. Floor Plan by wideangles.com.au

INT: 68 sqm
EXT: 8 sqm
CAR: 30 sqm
TOTAL: 106 sqm