

170 Gloucester St, Victoria Park, WA 6100

Sold - 15/07/2021

House 3  2  2 



Home Sweet Home!

Proudly presented by Edward Lim

Living here is all about lifestyle and locals say it's on one the best streets in Vic Park. Literally walking distance to everything, from the vibrant Albany Highway cafe/restaurant strip to the nearby dog-friendly parks and the river. Plus, positioned in the local intake area for the highly acclaimed Victoria Park Primary School. How convenient is that?!

Immaculately presented and finished with an eye for impeccable quality throughout. Meet 170 Gloucester Street. This two-storey double brick home is all about relaxed easy living and having an amazing sense of space and light.

Gracefully poised on a street-front 270m2 survey strata block with heaps of street appeal and surrounded by beautifully landscaped gardens. Internally, the home boasts nearly 201m2 of floor space with multiple living areas, a sumptuous master suite, lots of storage, and heaps of extras. The double front door leads to an entrance hall with a double-height ceiling complimented with gleaming blackbutt timber flooring throughout.

The heart of the home - open plan kitchen, dining, and living areas with sliding doors that effortlessly connect you to the outdoor undercover alfresco area - ideal for relaxing or entertaining guests outdoors. Did you notice the aggregate flooring as well? Nice right?! A third toilet is also available on the ground floor for your guests, if required.

The open plan kitchen is fully equipped, providing clean lines, plenty of stone bench space, and practical drawer storage. Modern stainless-steel appliances and a generous pantry complete this light and bright addition to the home.

The theatre area along the hallway is generously proportioned. Ideal for fun Family Movie Nights. The best spot to grab some popcorn, gather up the family, and have fun enjoying your favourite movies!

Upstairs finished with soft feel carpet throughout. The generous master bedroom features a must have walk-in-robe and its own ensuite bathroom. The other three bedrooms are good in size with built-in robes. A second bathroom features both a bathtub and shower area with a separate toilet which are also available to service bedrooms 2 and 3.

Listed By

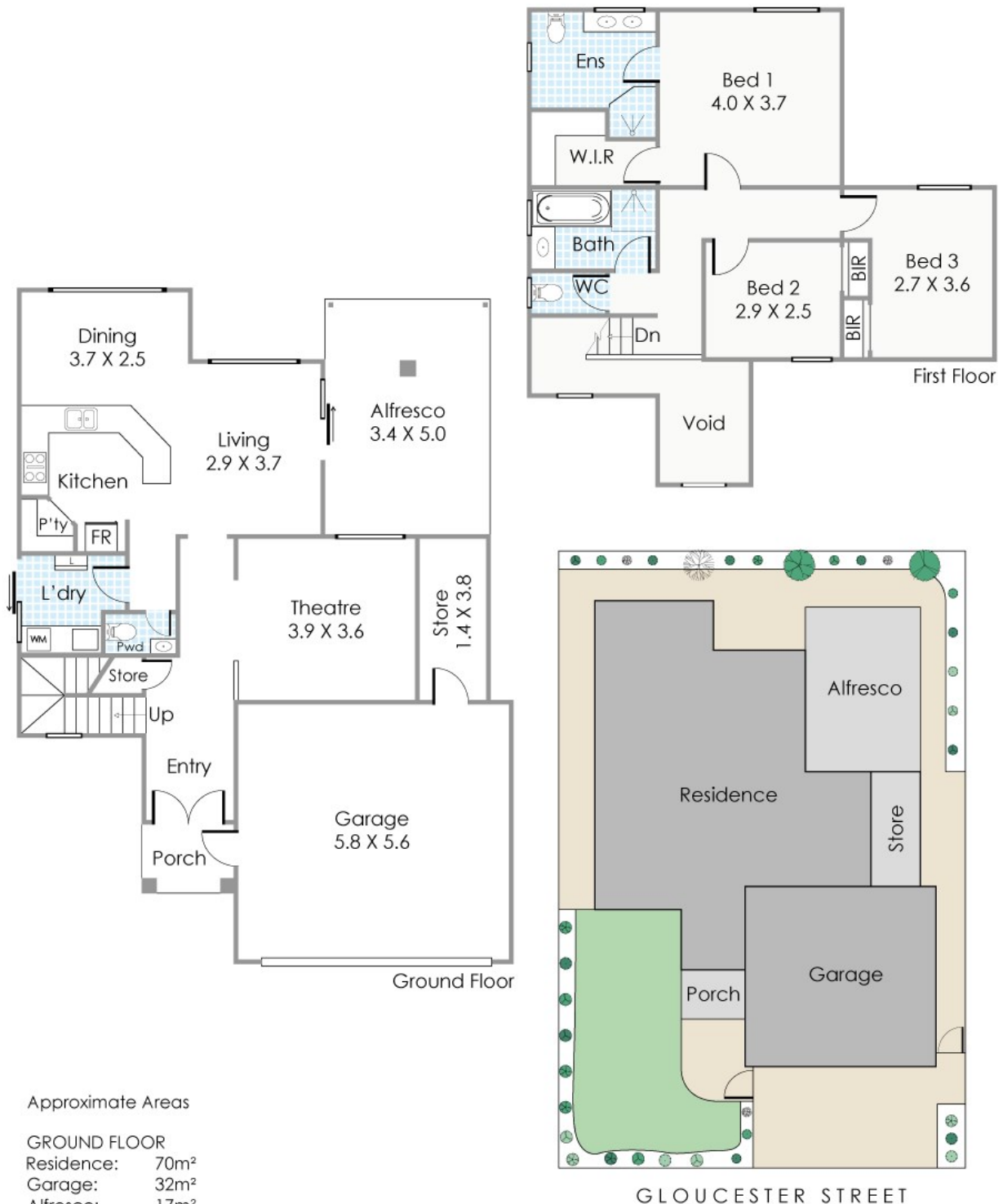
Edward Lim

Open for Inspection

By Appointment.



Floorplan



This floorplan is for illustration purposes only to show the layout of the property. Measurements and total areas do not include or account for wall thickness or roof area under eaves. Not to be used for any other purpose.
www.cribcreative.com.au



170 Gloucester Street, Victoria Park