

28 Brisbane St, Murwillumbah, NSW 2484

Sold - 20/01/2022

Medical/Consulting



FREEHOLD PHYSIOTHERAPY CENTRE

Freehold building for sale in excellent NSW far North Coast location.

The picturesque and thriving town of Murwillumbah is nestled in the scenic Tweed Valley at the base of Mount Warning, 30 mins from Gold Coast Airport, 20 mins to Cabarita Beach and 40 mins to Byron Bay.

The property is located in a highly visible CBD area across from tennis and netball courts and adjacent to shopping complex.

Situated on 465sqm of land, with laneway access, on-site and street parking and a large shade tree.

The building was attractively renovated in 2000 for purpose of original Murwillumbah Physiotherapy practice (estab 1986) and since then has been the home of Murwillumbah Physiotherapy Sports and Spinal Centre and is for sale due to the retirement of its principal.

There are four generous treatment rooms, a smaller acupuncture room and a large, high-ceilinged reception area that doubles for Pilates classes out of hours. From reception there are large tri-fold timber and glass doors which open to a covered outdoor verandah and seating area. Four rooms including reception area are air-conditioned and all rooms have polished original hardwood floors. Separate, bright and roomy kitchen/staffroom. Separate bathroom. Two lock-up storage rooms.

Excellent opportunity to expand existing practice. Excellent relationship with local GP's and specialists and large return visit and word of mouth referral base.

For more information regarding this property, building history or business details please ring Bernice on 0408 088 262

Disclaimer:

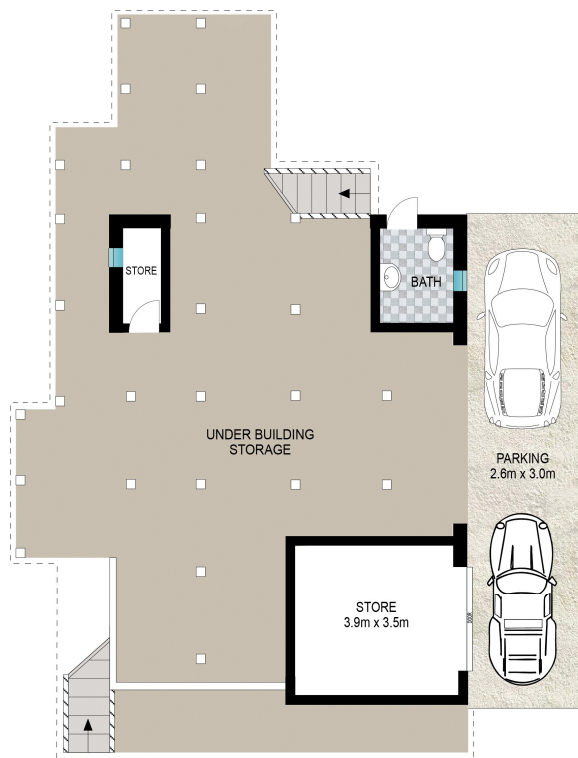
All information contained is gathered from relevant third party sources. We cannot guarantee or give any warranty about the information provided. Interested parties must rely solely on their own enquiries

Listed By

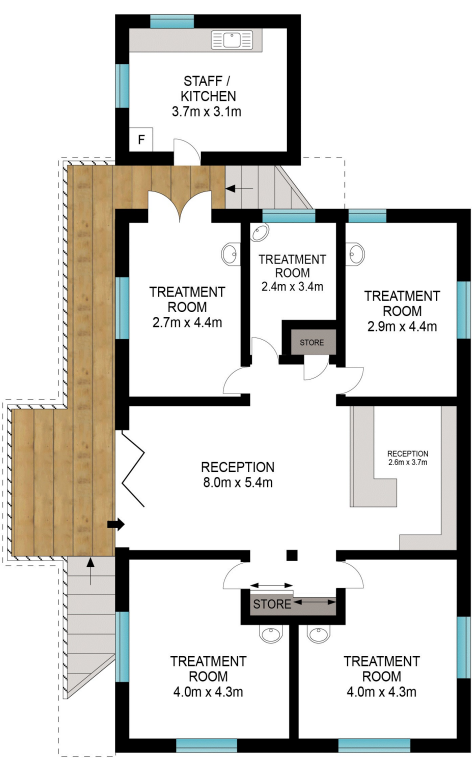
Bernice Melnikas
Phone: (02) 6674 1000
Mobile: 0413 056 403



Floorplan



GROUND FLOOR



UPPER FLOOR

UPPER (INT/EXT): 159 m²
GROUND (INT/EXT): 159 m²
PARKING: 8 m²
TOTAL: 326 m²



Scale in metres. Indicative only. Dimensions are approximate. All information contained herein is gathered from sources we believe to be reliable. However, we cannot guarantee its accuracy and interested persons should rely on their own enquiries.

28 Brisbane Street, Murwillumbah

