

1-8/1069 Canterbury Rd, Wiley Park, NSW 2195

Sold - \$2,550,000

Block of Units 16  8  8 



BLOCK OF 8 X 2 BEDROOM UNITS

A solid investment ideal for investors, developers and superannuation funds to purchase this whole block. Situated on a corner location opposite parkland and a close proximity to shops, transport, schools and only a short drive to the M5 motorway. This property offers an immediate income stream for the astute investor.

Features include:

- * 8 x 2 bedroom units
- * Spacious living areas
- * Eat in kitchens
- * Balconies
- * Separate individual laundry rooms with storage
- * Four lock up garages with internal access and carspaces
- * Total land area 853sqm approx
- * R4 high density zoning
- * Single title with potential for strata subdivision (Subject To Council Approval)

Do not miss out on this rare opportunity!

Auction On Site Saturday 8th May 2021 at 2:30pm

Open For Inspection Saturday 2-2:45pm

Details: George Vourlas 0412 074 222

Open for Inspection

By Appointment.

Listed By

George Vourlas

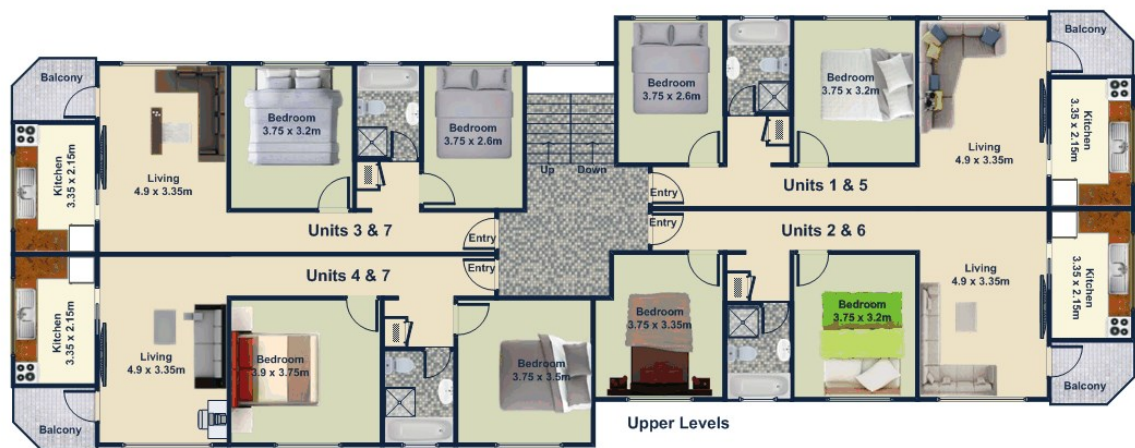
Phone: (02) 9789 2888

Mobile: 0412 074 222



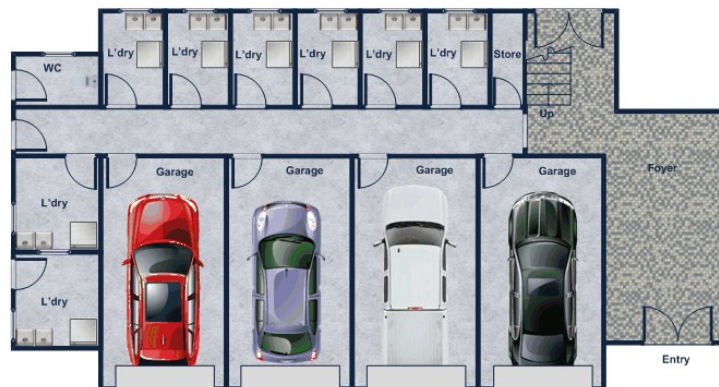
Floorplan

robert
andrew



Canterbury Road

Clio Street



1069 Canterbury Rd, Wiley Park

This plan is for illustrative purposes only, dimensions are approximate, it does not constitute part of any legal document or commercial contract for the sale of this property.

0 1.5m 2.5m 5m

**FLOOR
& FOTO**
0420 310 710