

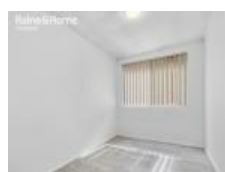
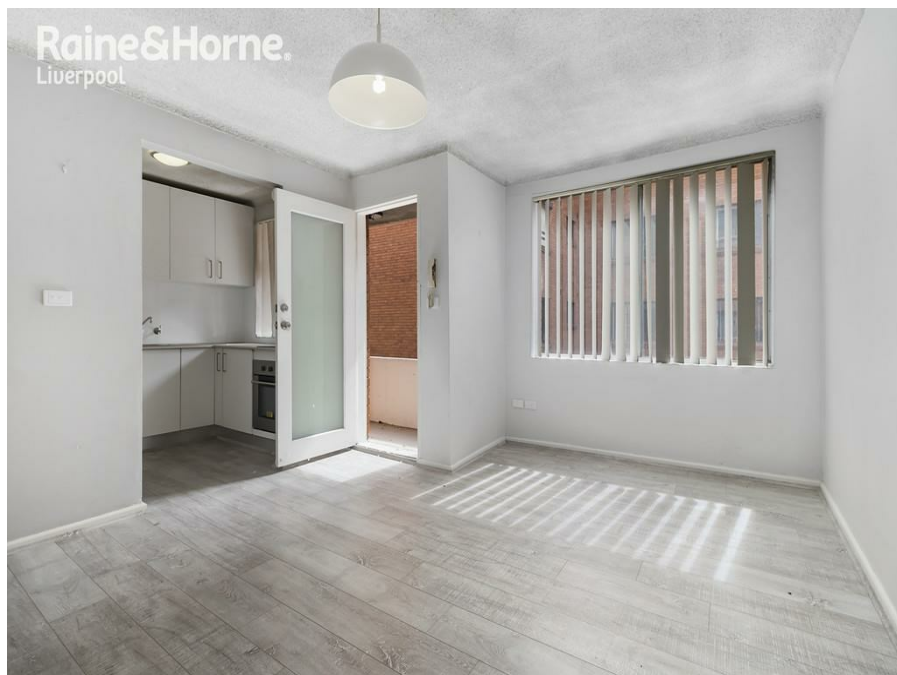


1/14 Forbes St, Warwick Farm, NSW 2170

Sold - 20/05/2021

Unit 2  1 



## Location Location Location!

A fantastic opportunity and location in Warwick Farm / Liverpool to enter the market, or invest in a highly sought after location. With a neat and cosy layout this home offers two bedrooms, a neat and tidy kitchen and a balcony all in a secure building with under cover parking , Located close to local amenities including , liverpool public and private hospitals , Liverpool Westfields, warwick farm and Liverpool train stations , the liverpool CBD with a variety of local schools, parks and South Western Sydney University.

**Open for Inspection**

By Appointment.

- First floor
- Council approx \$311 per quarter
- Water approx \$144.11 per quarter
- Internal approx 55sqm including balcony
- Total approx 68sqm
- Strata approx \$610

### Listed By

Vince Labbozzetta

Phone: (02) 9602 3333

