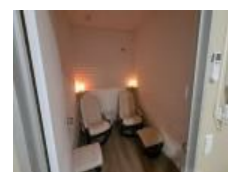
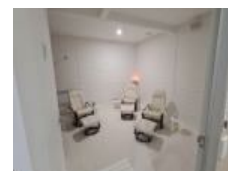


Unit 11/286 New Line Rd, Dural, NSW 2158**\$55,200 pa EX GST**

Commercial Shop

**PRIME LOCATION AND POSITION IN THE HEART OF THE BUSY DURAL B**

Great opportunity to secure this large retail/business premises.

- * Current fit-out consists of reception/foyer, meeting room, therapy or offices, womens and mens toilets, kitchenette and more
- * Substantial mezzanine level
- * Great proximity to Norwest Development Area, M1, M2 & M7 transit corridors

Mezzanine Level: 110m2 (approx.)

Ground Floor: 132m2 (approx)

Total: 242m2

For more details contact LJ Hooker Dural on 9651 1566

Please note office furniture not included

Open for Inspection

By Appointment.

Listed By

Michale Egiziano

