




2/118 Hopewood Cres, Fairy Meadow, NSW 2518

Sold - \$575,000

Townhouse 2  1  1 



Lifestyle + Location

Nestled in a well-maintained complex is this townhouse, ideal for first home buyers and investors alike.

- + spacious open floorplan living
- + private courtyard
- + complete with additional powder room and internal laundry
- + master with built-in wardrobes
- + bathroom with a full-size bath
- + single lock-up garage, additional complex parking
- + minutes' walk to Corrimal's amenities, ten minutes to Wollongong
- + council = \$294.00pa, water = \$290.00pa, Strata Fees \$605.00pq

Open for Inspection

By Appointment.

Perfectly positioned only minutes from Fairy Meadow restaurant, cafe and retail precinct and Wollongong's free shuttle service. An excellent lifestyle or investment opportunity minutes from the beach, UOW Innovation Campus and Wollongong CBD.

Whilst every effort has been made to ensure the accuracy and thoroughness of the information provided to you in our marketing material, we cannot guarantee the accuracy of the information provided by our vendors, and as such, Icon Realty Group makes no statement, representation or warranty, and assumes no legal liability in relation to the accuracy of the information provided. Interested parties should conduct their own due diligence in relation to each property they are considering purchasing. All photographs, maps and images are representative only, for marketing purposes.

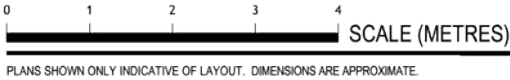
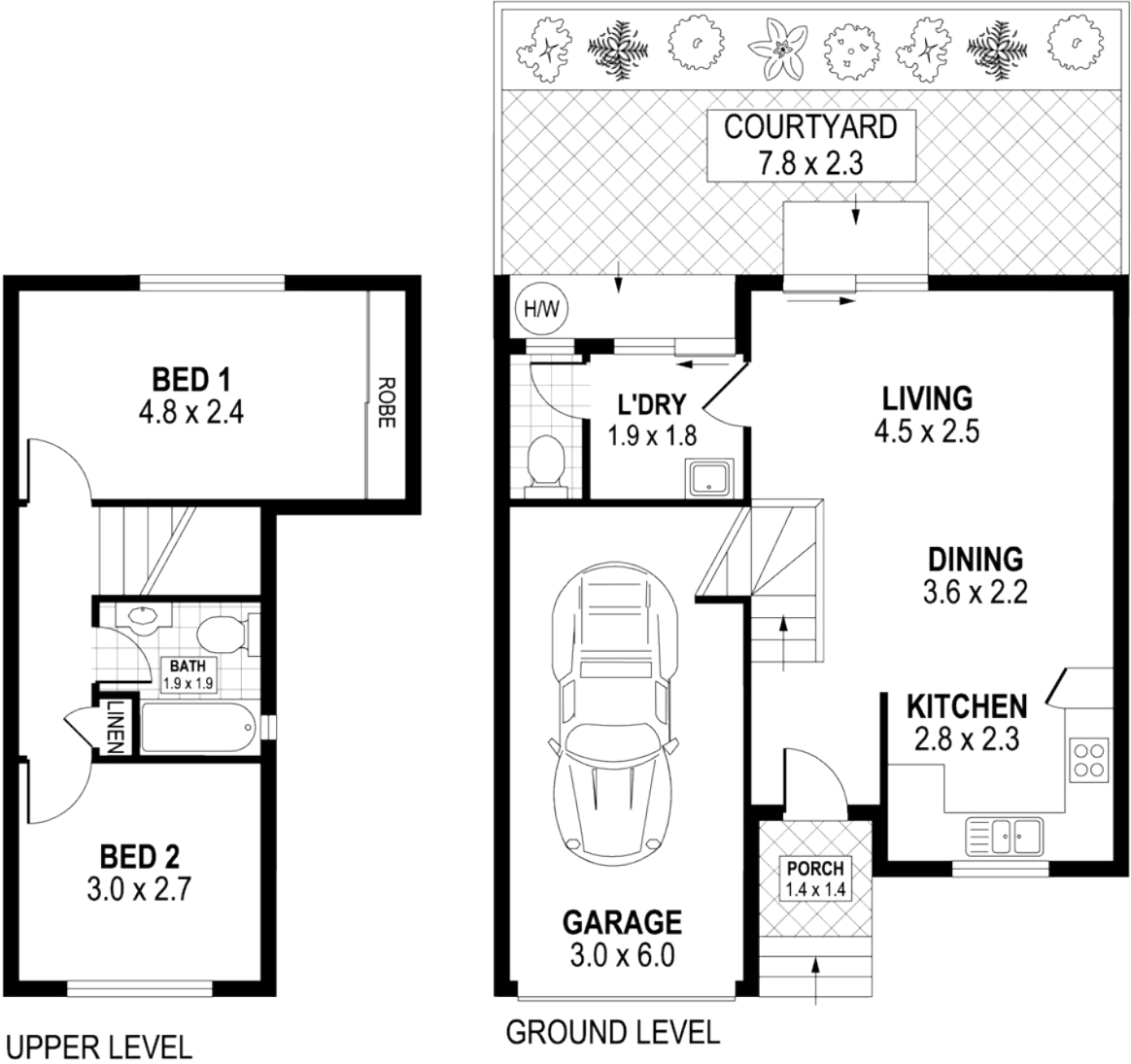
Listed By

Jian Liu
Phone: (02) 4226 5999
Mobile: 0421 467 889

Mirjana Ilic
Phone: (02) 4226 5999



Floorplan



INT : 66m²
EXT : 22m²
GARAGE : 18m²

2/118 HOPEWOOD CRESCENT

FAIRY MEADOW