

23/8 Archer St, Upper Mount Gravatt, QLD 4122

Sold - 30/03/2021

Apartment 2  2  1 



## SOLD BY THE SHIRLEY CHOW TEAM

This spacious trendy two-bedroom apartment in coveted Upper Mount Gravatt is near new presented and only a short walking distance to Westfield Garden City and all local conveniences. In an area popular with students, couples and professionals, this stylish unit across a generous 92sqm floorplan is a wise choice for both smart buyers and savvy investors seeking a carefree property that offers plenty of living areas for the household.

### Open for Inspection

By Appointment.

Located at top level, this much-loved unit boasting soothing vistas and azure pool setting from the good size tiled balcony, this is an opportunity you cannot miss.

Situated inside a 3-level apartment building on a quiet street, this spacious unit offers a secure car park beyond a remote-controlled gate for extra convenience and security. Within, however, you'll find large glistening tiles and plush carpets, pristine white walls, air-conditioning unit, ceiling fans and plus so much more.

- A huge open-plan tiled dining and lounge area, with A/C unit and fan for generous and comfortable lounging and entertaining
- Living space flows out to a good size tiled balcony with calming vistas and plenty of space for entertaining and relaxing
- A sizeable and chic kitchen with solid black stone benchtops, electric stovetop, oven, dishwasher and ample white cabinetry
- Two spacious bedrooms with ceiling fans and big sliding wardrobes
- Modern ensuite with large shower, toilet and single vanity plus second bathroom with huge shower, toilet and vanity
- Massive BBQ area, landscaped garden including a fully fenced in-ground pool; fantastic area for you to host your birthday parties and a great place to catch up with family and friends in a peaceful environment.

Only a short stroll to Westfield Garden City and a plethora of surrounding shops, takeaways, cafes, restaurants, recreation and more, this unit offers exceptional walkability.

Residents can use the nearby Pacific Motorway to gain swift access to the Brisbane CBD in 17 minutes, with a bus stop just down the road on Tyron Street taking occupants to the Garden City Interchange or Fortitude Valley.

Being walking distance to Westfield Garden City though means that the Upper Mount Gravatt Bus Station is but a quick walk away too, making access to the city and its surrounds a breeze.

For car owners though, they can expect a quick seven minute drive to get them to popular Market Square or Griffiths Unile's Nathan campus.

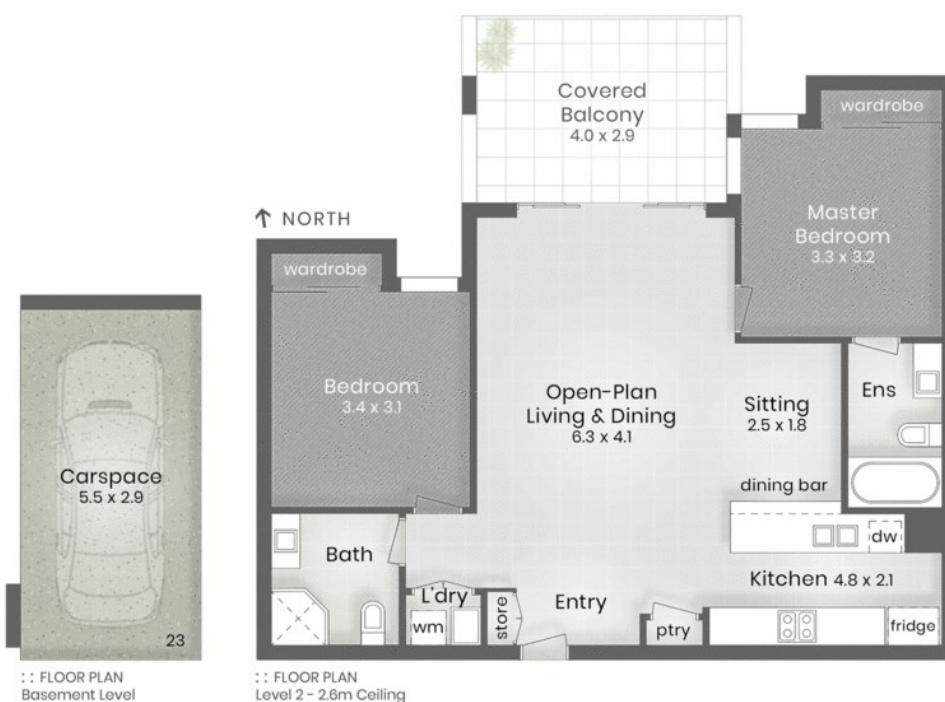
### Listed By

Shirley Chow

Phone: (07) 3344 0288

Mobile: 0419 747 988





**LJ Hooker**  
Sunnybank Hills

**FLAME TREES**  
23/8 Archer Street  
UPPER MOUNT GRAVATT

 2 Bed 2 Bath 1 Car

Internal 80m<sup>2</sup>  
Covered Balcony 12m<sup>2</sup>  
Total 92m<sup>2</sup> or 10 Squares

---

Carspace 16m<sup>2</sup>

**puredesign** plans for  
CONCEPTS purpose

No permission is given to use or alter this Floor Plan without the consent of Pure Design Concepts. The overall presentation style, layout, imagery, fonts, background, colours and terminology has been originally created by PDC and is subject to strict copyright. No ownership is taken for building design. All measurements are approximate & individuals should rely on their own information. Find out more at [puredesignconcepts.com.au](http://puredesignconcepts.com.au)