




153/1-3 Beresford Rd, Strathfield, NSW 2135

Sold - 21/05/2021

Apartment 2  2  2 



Sold - David Pisano

Apartment Living at it's Best, 138sqm

Located on level 6 of the popular Strathbelle security building, this spacious apartment is immaculately maintained and presented, boasting polished floors throughout, an open outlook with a sunbathed north aspect and one of the best floor plans available. It offers a total area of 138sqm with lifestyle advantages in a convenient "walk to everything" location, just metres to Strathfield's vibrant cafes, shops and transport for express CBD access.

- \* Two bedrooms with built-ins, main with ensuite, all with balcony access
- \* Spacious open plan lounge and dining with built in entertainment unit
- \* Generous full width entertainers balcony with an open outlook
- \* Granite kitchen with s/steel appliances, gas cooking and dishwasher
- \* Ducted air-conditioning throughout, internal laundry, ample storage
- \* Side by side security parking for two cars, ample visitors parking
- \* Heated in-ground pool, spa & sauna facilities, intercom entry and level lift access
- \* Ideal home or an easy care investment with great growth and rental prospects
- \* Total area of 138sqm, security building with gated entry, completed in 2002

Details: David Pisano - 0408 835 606  
Vishnu Alapati - 0452 355 606

Open for Inspection

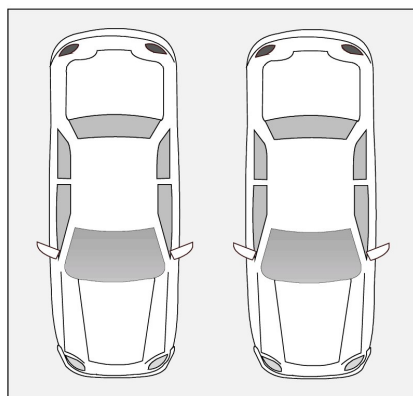
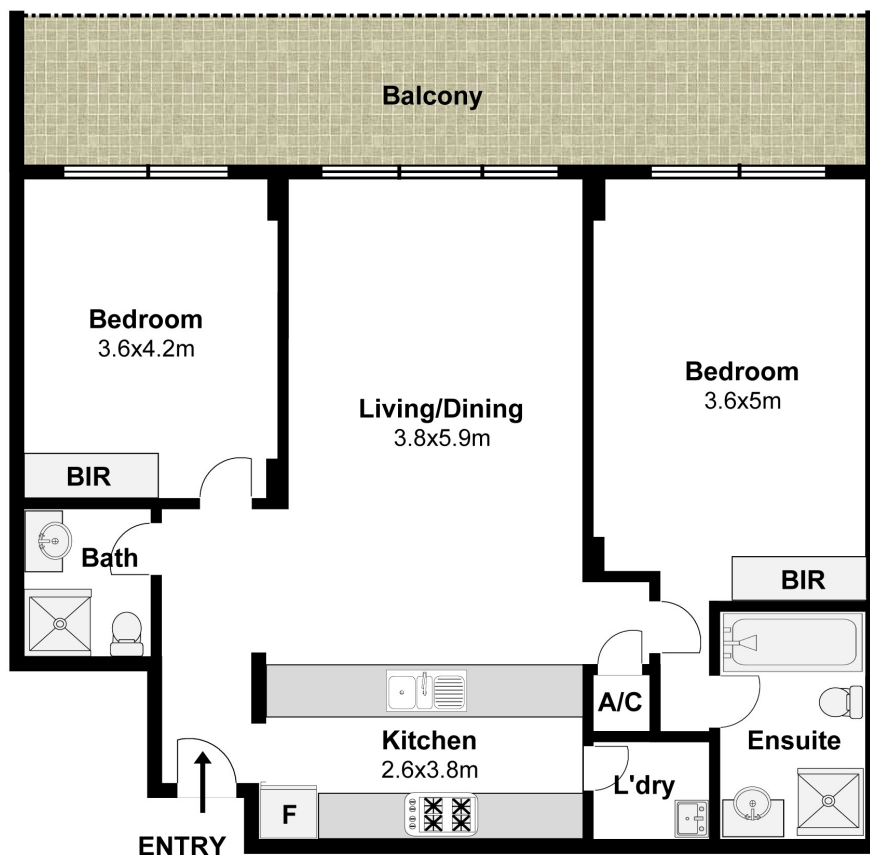
By Appointment.

Listed By  
David Pisano

Tom Xenakis  
Phone: (02) 9746 2222



## Floorplan



**Secure Car Spaces**

**153/1-3 Beresford Rd Strathfield**



The following floor plan is shown for presentation purposes only and is not part of any legal document. All measurements and figures are approximate.