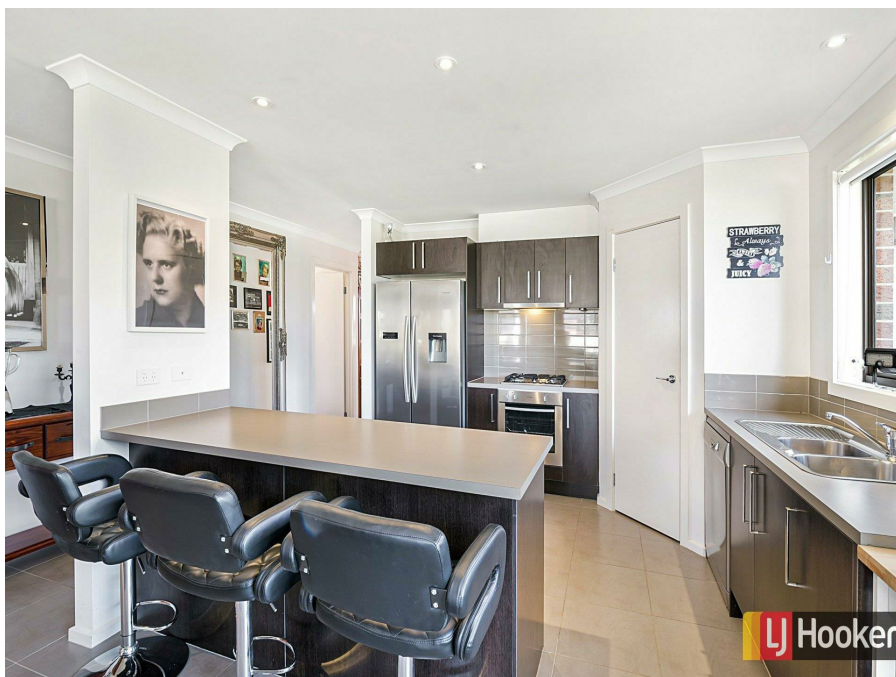


14 Mikada Bvd, Kilmore, VIC 3764**Sold - 5/03/2021**

House 4 2 2



Modern Family Home in Great Location

Situated in the ever so popular Kingsgate Village Estate, this beautiful family home is complete with plenty of upgrades and is sure to tick all the boxes. It showcases an open plan kitchen/meals/living area, separate lounge and 4 spacious bedrooms, all with built-in-robies, plus ensuite and walk-in robe to the master bedroom. The kitchen is sure to ignite any chef's flame boasting quality 600mm stainless steel appliances, generous pantry, ample cabinetry, dishwasher and a breakfast bar. Journey outside to find an impressive sized yard with plenty of space for the kids to play, complete with an alfresco, perfect for entertaining, and an extensive garden landscaped with fruit trees & a massive raised veggie patch. Other features include the comforts of cooling, ducted heating, solar hot water, a massive array of 30 solar panels supported by 2 inverters, 3 x 3 metre garden shed, eaves surrounding the home, access to the yard via a rear garage roller door with room to store a boat or trailer. Located a short stroll from Kilmore's newest park and playground, within walking distance to the local school district and just a two-minute drive into town. Inspection will not disappoint and is highly recommended. Call Sally Long on 0477 437 281.

Open for Inspection

By Appointment.

Listed By
Sally Long



Floorplan



Scale in metres. Indicative only. Dimensions are approximate. All information contained herein is gathered from sources we believe to be reliable. However we cannot guarantee its accuracy and interested parties should rely on their own enquiries.

14 Mikada Boulevard, Kilmore

