

**Shop 18 345 Peel St, Tamworth, NSW 2340**

**By Negotiation**

Retail Shop



**COME JOIN THE RETAIL FAMILY AT THE ATRIUM**

this is a mixed use Center combining approximately 2074 square meters or 19 retail outlets and 463, square meters of serviced executive suites.

- 75.64 square meters gross leaseable area;
- Cafe with kitchen;
- Use of common area tables and chairs;
- hosting national and local business;
- Fully air conditioned;
- Main thoroughfare between Peel Street and Kable Avenue;

**Open for Inspection**

By Appointment.

**Listed By**

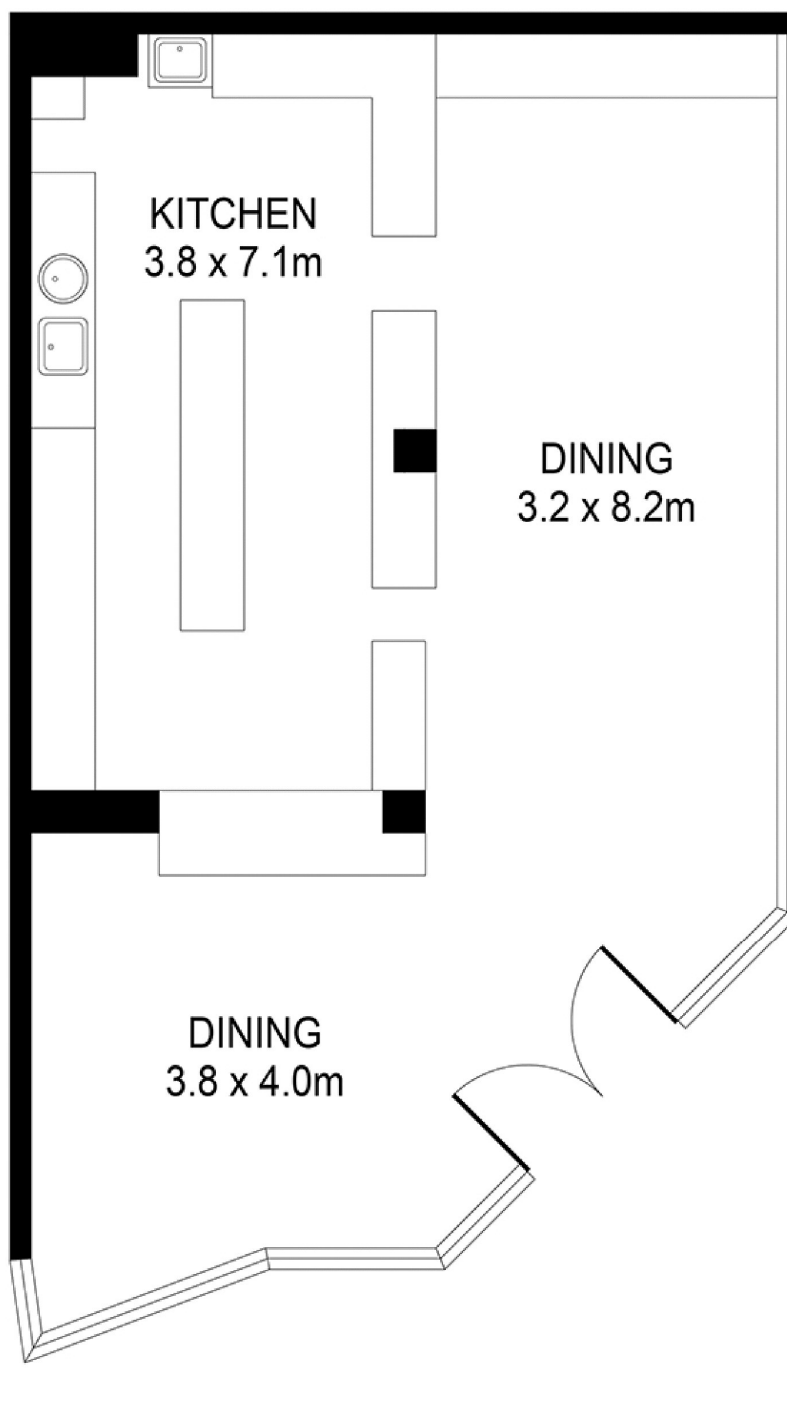
Gavin Knee  
Phone: (02) 67661411  
Mobile: 0427 669 151

Gavin Knee  
Phone: (02) 67661411  
Mobile: 0427 669 151



Floorplan

## Shop 18, The Atrium



**burke & smyth**  
commercial

Total Area: 75m<sup>2</sup>

Plan(s) shown are indicative only of layout. Dimensions are approximate.  
No warranties or guarantees are given. Interested parties should rely on their own inquiries.  
Floor plan by Protography.net.au