

218/185 Morphett St, Adelaide, SA 5000

Sold - 11/05/2021

Unit 1  1 

FULLY FURNISHED AND READY TO ENJOY - OR RENT OUT FOR STRONG

Welcome to The Gallery on Morphett.

Low-maintenance, convenient, well-styled and ready to go – perfect for those looking to capitalise on all the Adelaide CBD has to offer. This fully-furnished one-bedroom apartment comes complete with everything you need – from access to the precinct's pool, sauna and spa facilities (with beautiful views of the Adelaide Hills) to dishwasher, private sunroom, large bathroom, oversized built in robe and secure access to both building and car park (available to rent).

Just meters from Light Square, a 5-minute walk to Gouger Street and a 7-minute walk to the Adelaide Central Markets – placing boutique shopping, cultural markets and fantastic eats at your fingertips.

Only a short stroll takes you to the new Royal Adelaide Hospital, Rundle Mall, Adelaide University and Adelaide's Vibrant East End.

And good news for the savvy investor - With a rental assessment of \$370 per week, this unit comes with the added benefit of coming completely decked out with stylish furniture and practical appliances. A valuable addition to any portfolio – there's nothing left to do except reap the rewards.

RLA 274363

Open for Inspection

By Appointment.

Listed By

The Office

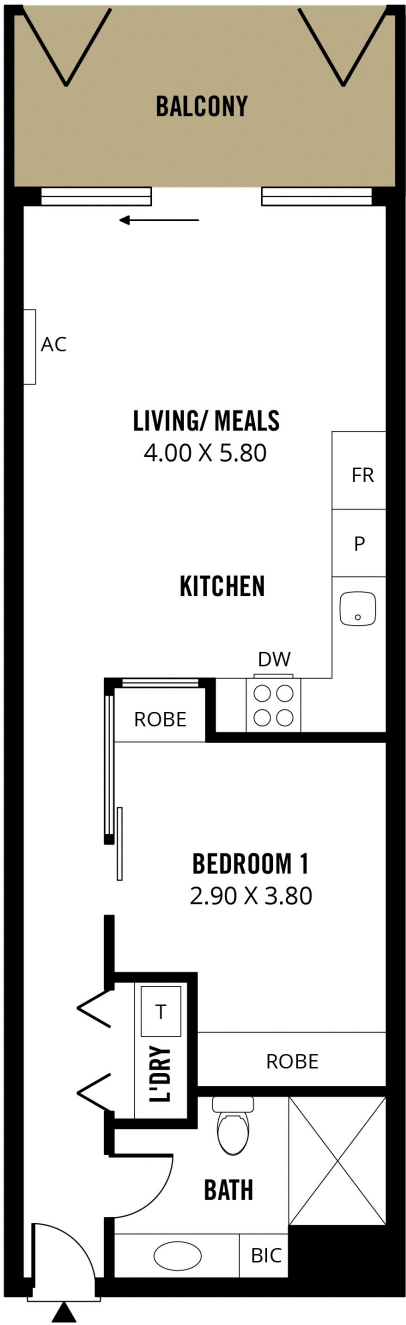
Phone: (08) 8373 1333

The Office

Phone: (08) 8373 1333



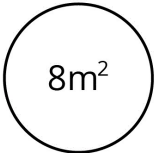
Floorplan



TOTAL



Living



Balcony

Scale in metres. This drawing is for illustration purposes only. All measurements are approximate and details intended to be relied upon should be independently verified. Produced by **The Fotobase Group**

