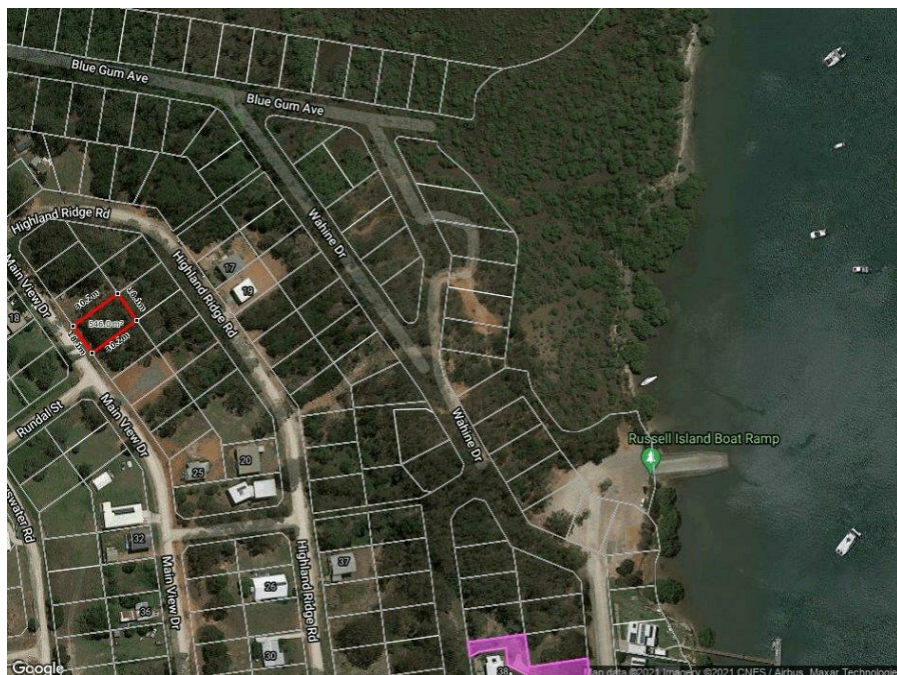


15 Main View Dr, Russell Island, QLD 4184

Sold - 27/04/2021

Residential Land



Walk To Wahine Dve Boat Ramp

546m2 high elevated land located only minutes walk to Wahine drive boat ramp. Easy access and surrounded by larger homes.

Level land and owner is asking for offers

Open for Inspection

By Appointment.

Call Trent Jamieson on 0403962627

Listed By

Trent Jamieson

Phone: (07) 3409 2255

Mobile: 0403 962 627

