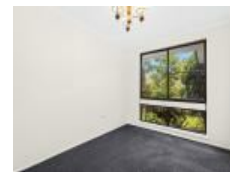


**35 Warwick St, Berkeley, NSW 2506**

**Sold - \$620,000**

House 3  1  1 



## North-Facing Family Home

Awaiting only your personal touch, this light-filled single storey residence will soon be the envy of the neighbourhood. Built in a leafy setting, this brick veneer home displays a floor plan of tremendous functionality complete with air-conditioned living, a spacious kitchen equipped with a gas cooktop, and three quietly nestled bedrooms featuring built-in robes throughout. Large, level and private, the grassy backyard is fully fenced and gated for the safety of kids and pets. This is the perfect lifestyle opportunity for a smart first home buyer or investor, just 10 minutes from Wollongong CBD.

### Features:

- Spick and span in presentation - simply move in and enjoy
- Combined lounge and dining with flowing in/outdoor design
- Bright two-way kitchen boasts ample space for a dining table
- Bathroom tiled floor-to-ceiling with tub plus shower
- Separate laundry, linen press, detached garage, garden shed
- Easy access to local schools, buses, lakeside and M1 on-ramp

\* Images may contain digital furniture

### Open for Inspection

By Appointment.

### Listed By

Fady Saad  
Phone: (02) 4226 9000  
Mobile: 0422 050 392

Sarah Weise  
Phone: (02) 4226 9000  
Mobile: 0447 155 901

