

6 Emerald Cl, Griffin, QLD 4503**Sold - 11/02/2021**House  **LARGE HOME! 973m2 BLOCK! 6m x 3m SHED!**

This very spacious double storey brick home sits on a large 973m2 flat block with bush land for neighbours. The home is set back from the street offering a very private and secluded location.

The home features:

- Large main bedroom with walk-in robe and ensuite
- Open plan family and meals area
- Separate lounge room
- Air-conditioning | Ceiling fans
- 6m x 3m shed
- Converted garage - 2x utility rooms
- Modern kitchen
- Heaps of storage
- 2 bathrooms | 3 toilets
- Abundance of fruit trees
- Separate laundry
- 4 large bedrooms plus utility rooms

Open for Inspection

By Appointment.

OFFICE OPEN 7 DAYS

Listed By

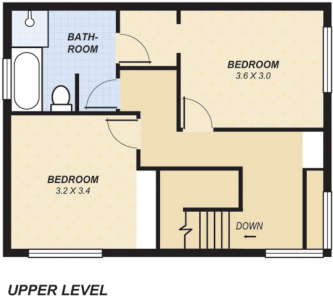
Greg Booker

Phone: (07) 3482 4111



Floorplan

6 Emerald Close, Griffin



Area	m ²
Living:	160
Under cover area:	11
Shed:	24
Total area (approx): 295m ²	
Land:	972m ²

DISCLAIMER: This drawing is for illustration purposes only. All measurements are approximate and details intended to be relied upon should be independently verified.