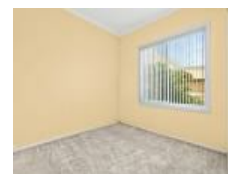


10 Junction St, Helensburgh, NSW 2508

Sold - \$775,000

House 3  1  1 



Cottage Charm

Positioned in a central location an easy walk to schools, shops, cafes and parklands this affordable 3 bedroom cottage style home, plus sunroom, offers a great entry point into the local property market.

Open for Inspection

By Appointment.

HOME:

- * This single level home offers an amazing opportunity to secure a freestanding home at a reasonable price.
- * Sunfilled living area with a/c for year round comfort plus sunroom.
- * Three bedrooms all with BIR's
- * Updated kitchen with adjoining dining area
- * Single car garaging plus carport accessed from the rear lane
- * Grassy fully fenced yard with paved entertaining area
- * Loads of potential to add value

LOCATION:

- * Positioned an easy walk to local schools, shops, cafes with bush walking trails almost at your doorstep.
 - * This quaint, friendly town offers all of your basic lifestyle amenities:- schools, shops, supermarkets, cafes, restaurants, sporting clubs and public transport are all available only moments from your front door. It is situated approximately 50 minutes South of Sydney CBD and 30 minutes North of Wollongong CBD.
 - * Stanwell Park Beach and the Royal National Park are only minutes drive, allowing you to enjoy that regional coastal lifestyle and all that comes with it.
- Helensburgh offers a community-based regional lifestyle with easy access to Sydney and Wollongong as well as all that the Northern Illawarra has to offer.

** Whilst every effort has been made to ensure the accuracy and thoroughness of the information provided to you in our marketing material, we cannot guarantee the accuracy of the information provided by our vendors, and as such, Ray White Helensburgh makes no statement, representation or warranty, and assumes no legal liability in relation to the accuracy of the information provided. Interested parties should conduct their own due diligence in relation to each property they are considering purchasing. All photographs, maps and images are representative only, for marketing purposes.

Listed By

Ron Kissell
Phone: (02) 4294 7000
Mobile: 0410 148 397

Chris Kissell

