

24 Knott Ct, Whitfield, QLD 4870

Sold - 11/02/2021

House 5 3 4



## Immaculate Residence, Blue Ribbon Location

Elevated in Whitfield, this prestigious residence has not been offered to the market in over 21 years and provides its occupants with grand proportions and stunning views in a dress-circle location.

**Open for Inspection**

By Appointment.

With uninterrupted breathtaking panoramic views, the home has an open plan design over two expansive levels allowing harmonious opulent living.

The upper level (positioned at street level) is finished in timber floors has an enormous open plan living and dining area, beautifully appointed kitchen and seamless transition to the full length balcony and the pool and surrounding deck area.

The modernised kitchen is finished with granite bench-tops, high quality new European appliances, breakfast bar, ample storage options and servery to the pool area.

The generous master bedroom suite is positioned on the upper level and has an ensuite and walk-in-robe. A second bedroom with built in wardrobe, private access to the main bathroom and private external access is also positioned on this level. A study/third bedroom with built-in wardrobe is positioned near the front entrance to the home.

The internal laundry is found on the upper level allowing its residents to live effortlessly on the main level of the home.

The lower level with tiled flooring throughout has a spacious rumpus room (a kitchenette could easily be added to this area) that extends to a balcony, huge home office/fifth bedroom with office/library/sitting room and private external access, two further bedrooms (each with built-in wardrobes) and a bathroom.

Further impressive features include:

- Ducted air-conditioning
- Security screens
- Security system back to base
- Internal laundry with built-in storage and direct access to outdoor clothesline
- Car accommodation for three vehicles (plus further off street parking)

### Listed By

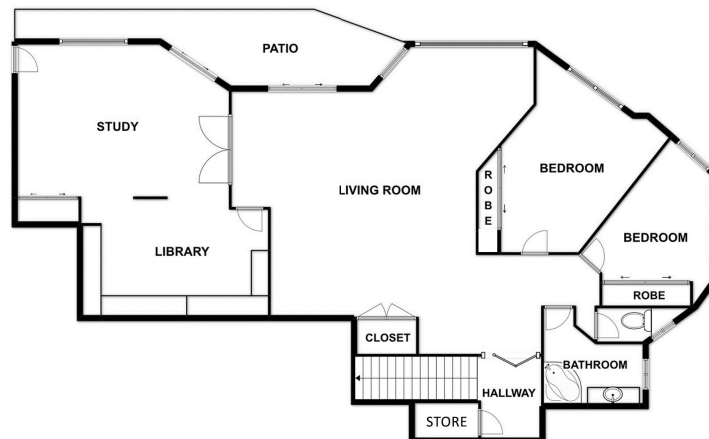
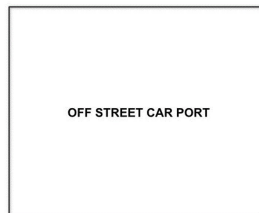
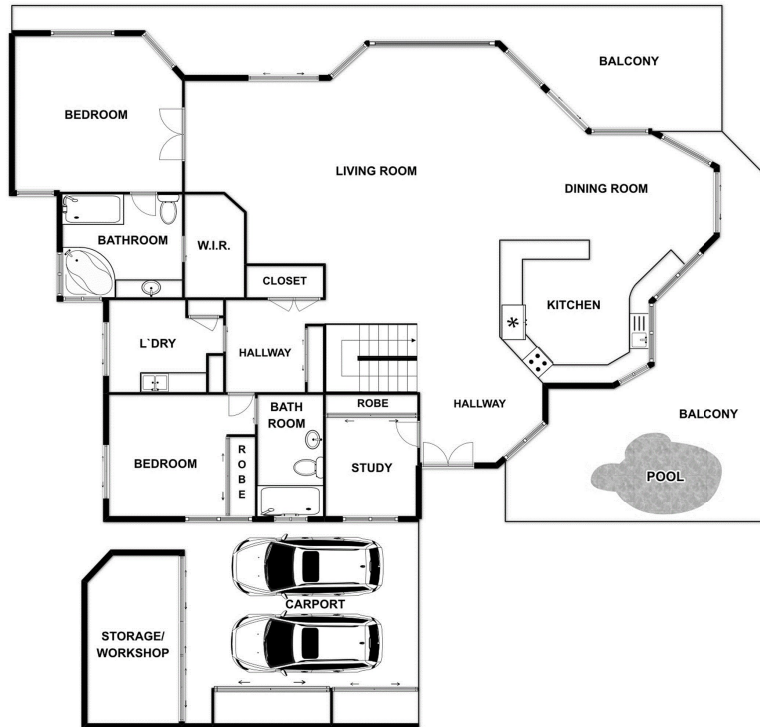
Nadine Edwards

Phone: (07) 4053 9999

Mobile: 0423 602 606



## Floorplan



## FLOOR PLAN

Plan is not to scale and is indicative of layout. It is for illustrative purposes only. All room sizes and dimensions shown on this plan, including, but not limited to, doors, windows, cabinets are approximate. Property Shots Australia gives no guarantee to the accuracy of the document.

# 24 Knott Court, Whitfield