


19 Ellen St, Moonta, SA 5558**Sold - \$132,000**Other 2  2 **SOLD**

This is a commercial premises situated in the heart of popular Moonta. This 2 storey shop premises could tell some stories.

This building would be ideal for a business owner looking at developing their own office /shop in the main business district. It is situated on a 300m2 allotment with approximately 241m2 of building including both levels.

The main front entrance room is 58m2 12.1 m x 4.8 metres and leads to 4 more rooms with a wet area/future kitchen area at the rear. Upstairs offers 2 more rooms with the front upper level room being 23.5m2 5x4.7metres. There are 2 outside toilet areas and a store room. Move your business and lifestyle to the lovely seaside town of Moonta. Five minutes to work and home again. Escape the rat race. Council rates \$2449.20.

Open for Inspection

By Appointment.

Listed By

The Office

Phone: (08) 8825 2555



Floorplan

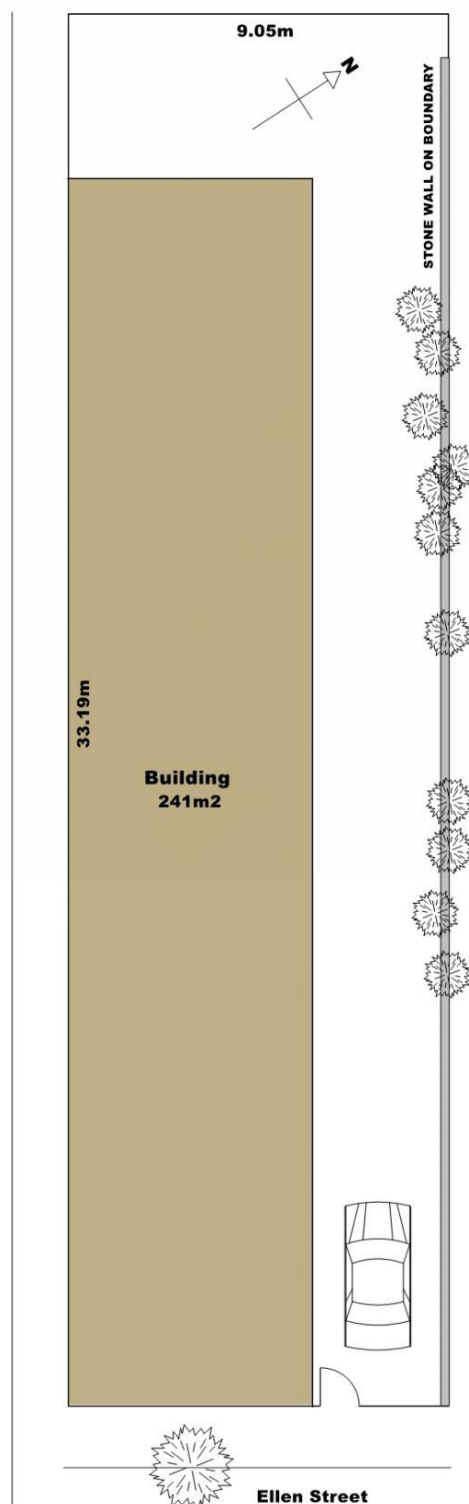
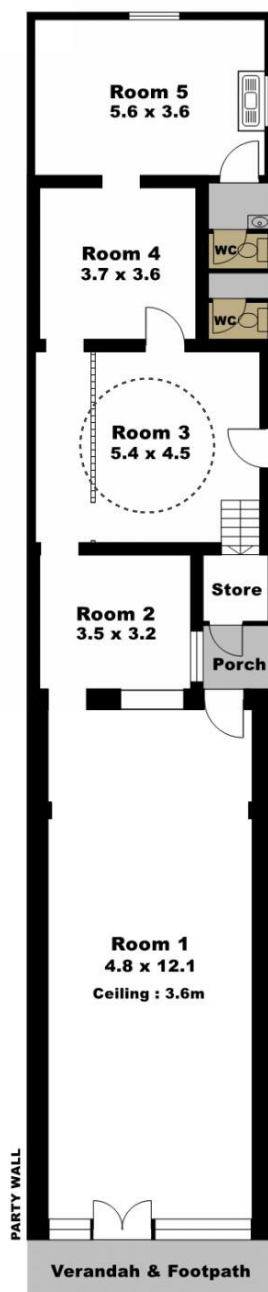
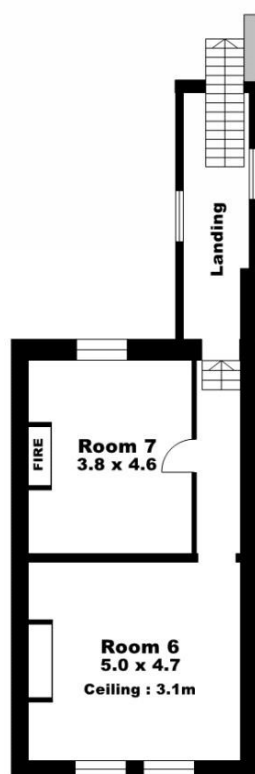
19 Ellen Street Moonta

| | |
|-----------------|-----|
| Ground Level | 169 |
| Upper Level | 72 |
| Total Approx m2 | 241 |

Ceiling : 2.4 - 3.6m

Land : 300.36m2

 Underground Tank
Approx size and position



UPPER LEVEL

GROUND LEVEL

SITE

CENTURY 21
Yorke Peninsula

C21.com.au/yorkepeninsula
P: 08 8825 2555

This floor/site plan is for illustrative purposes only. All dimensions, fittings and fixtures are approximate. m2 totals include exterior walls. No warranties or representations are given or intended by illustrator or agent.
www.floorplansandmore.com.au



