

28 Rise Cct, Pacific Pines, QLD 4211

Sold - 13/07/2020

House 4  2  2 



\$425,000 for a 4 bedroom home!!

This is sensational value and will be sure to fly out the door. Perfectly positioned in the heart of the Pacific Pines community, this stand alone home is situated in "Springwood Rise". It is an elevated position and is located in a small community of houses and townhouses that have a small body corporate that includes a pool and BBQ area for the residents.

Open for Inspection

By Appointment.

Perfectly positioned, the home is within a stones throw of everything that makes Pacific Pines such a wonderful place to live - schools, shops, parks, skate park, restaurants & pubs.

The house itself is a modern, single level rendered home that sits on a 378m2 block of land is low maintenance making it perfect as an investment, first home or a downsizer.

Features Include

- 4 bedrooms with built-ins
- 2 bathrooms, ensuite to main
- Open plan lounge/dining combined
- Air conditioned
- Private rear courtyard in the fully fenced yard
- Double auto garage
- Modern, open kitchen with plenty of cupboard and bench space, plus dishwasher
- Currently returns of \$450.00 per week
- Body Corporate of only \$30 per week
- Stand alone house on a 378m2 block.

Call Alex McCormack on 0411 510 099

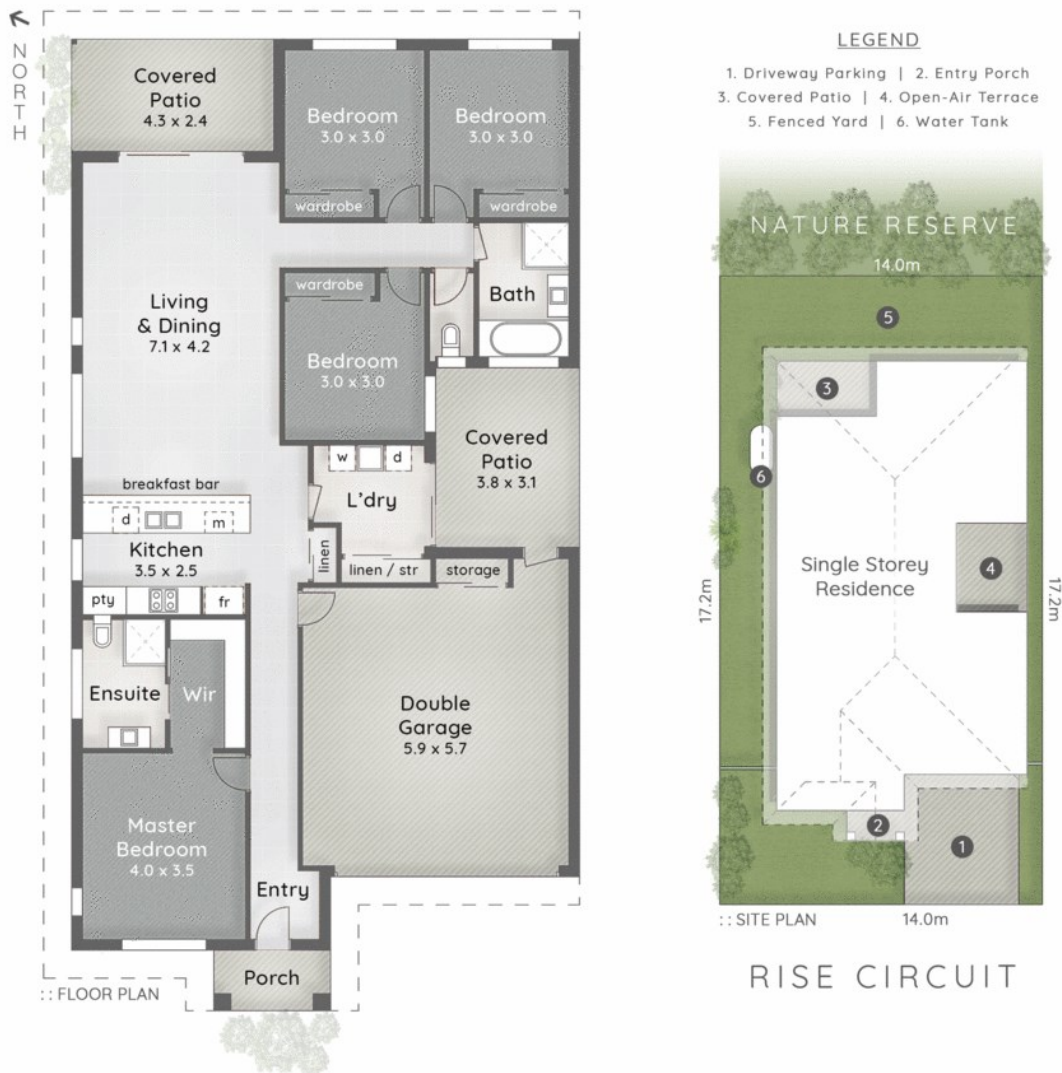
Listed By

Alex McCormack
Phone: (07) 5591 5222
Mobile: 0411 510 099

John McCormack
Phone: (07) 5591 5222
Mobile: 0411 879 468



Floorplan



28 Rise Circuitt PACIFIC PINES



Alex McCormack 0411 510 099
Ben Latimer 0402 921 314

378m² 4 Bed 2 Bath 2 Car + 2 Off-Street
Internal 181m² | Patio & Porch 13m² | Total 194m² or 21 Squares

The overall presentation style, layout, imagery, fonts, background, colours and terminology are subject to strict copyright of Pure Design Concepts. No ownership is taken for building design. All measurements are approximate & individuals should rely on their own information. Find out more at puredesignconcepts.com.au

puredesign plans for purpose