

4 Alt Cres, Ainslie, ACT 2602

Sold - 11/08/2020

House 4 2 1



## Classic Beauty & Charm in a Tightly Held Enclave

If you saw a photo of this home in a magazine, you'd know exactly where it was. This home is iconic Canberra circa 1920. Red brick teamed with white render on the exterior. Double timber sash windows and terracotta roof tiles spotted with lichen. All architectural hallmarks of historic Ainslie homes built in the early years of our Capital's establishment.

**Open for Inspection**

By Appointment.

A piece of our heritage and suitably listed thus. Built in the days when the suburb of Ainslie encompassed both Reid and Braddon and open fireplaces were the norm. Named after Baron Augustus Alt, the first surveyor-general of NSW, this quiet enclave has been tightly held and it's not hard to see why.

We've all driven past these historic homes on the edge of the city and admired their character. Set in the only crescent street off Limestone avenue, this home has a charismatic charm that stands out in a world now full of cookie-cutter houses. It's one of the unique few that capture a moment in time and solidly stand watching as the crisp modern apartment buildings rise up to change the Canberra skyline.

This home has been appreciated and loved for the Grande Dame that she is. This is in keeping with the homes heritage status, it has been respectfully renovated over recent years to retain her charms whilst bringing her into the modern era. All characterful elements having been preserved, such as 9ft high ceilings, double timber sash windows, polished Cypress & Jarrah flooring and original picture rails, are all complimenting, linking tradition with change.

Both the main bathroom and ensuite were renovated in 2016 and the renovated kitchen, encased in beautiful timber windows, now includes the modern essentials with caesarstone benchtops, new cabinetry and new modern appliances. You'll love the efficient mains gas heating but the brick fire-places, one in the entry and one in the master bedroom as well as a slow combustion log fire in the loungeroom, is where you'll congregate on those chilly Canberra nights.

More than perfect for a family seeking a home on the city fringe with both character and modern touches, this home is close to all of Canberra's best amenities. Reputable schools, both public and private, the Canberra Centre, Australian War Memorial, Braddon and Mt Ainslie, all walking distance. The Ainslie shops is highly revered for its great supermarket, quality retail shops, gastro pub Edgar's Inn, Pilot restaurant and other great independent shops and services. It's a location and life-style coveted by many. The block is a super generous 1,032m2 which means that there's ample room to do more if you want to.

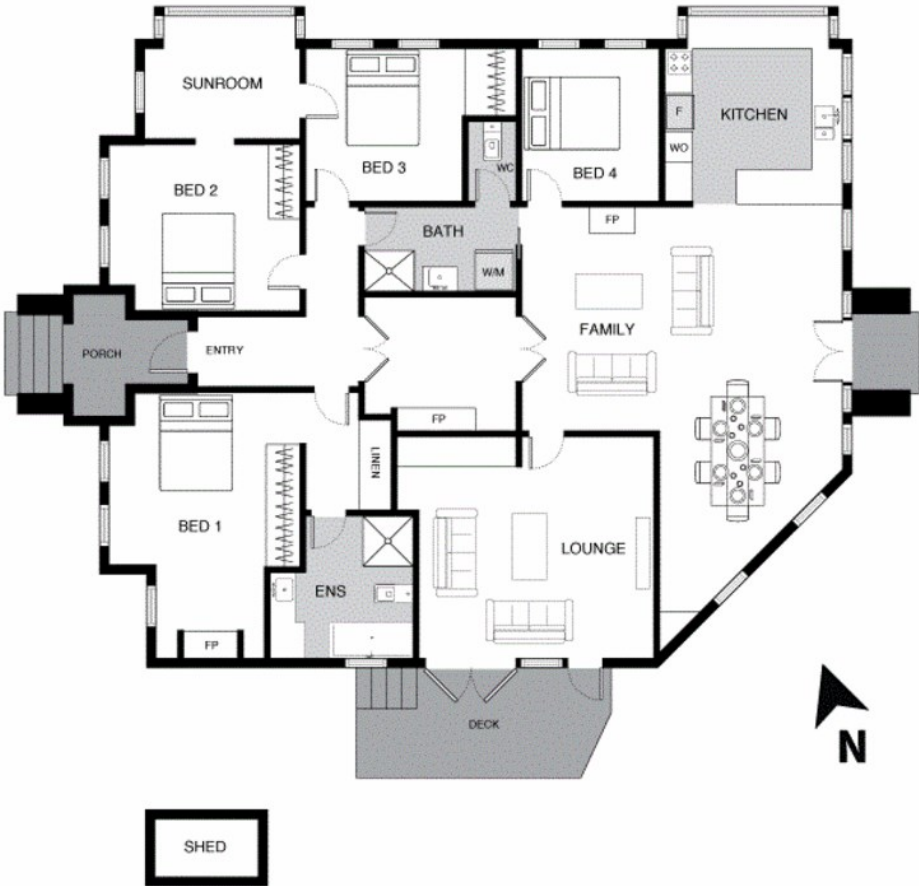
This heritage masterpiece is an icon of a bygone era and is now bequeathed to you. Contact Stephen Bunday today to discuss your future in this grande historic home.

### Listed By

Stephen Bunday  
Phone: (02) 6257 2111  
Mobile: 0416 014 431



Floorplan



THIS FLOORPLAN IS INDICATIVE ONLY. DIMENSIONS ARE APPROXIMATE. ALL INFORMATION CONTAINED IS GATHERED FROM SOURCES WE BELIEVE TO BE RELIABLE. WE CANNOT GUARANTEE ITS ACCURACY AND INTERESTED PARTIES SHOULD RELY ON THEIR OWN ENQUIRIES.