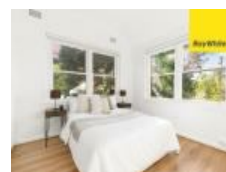
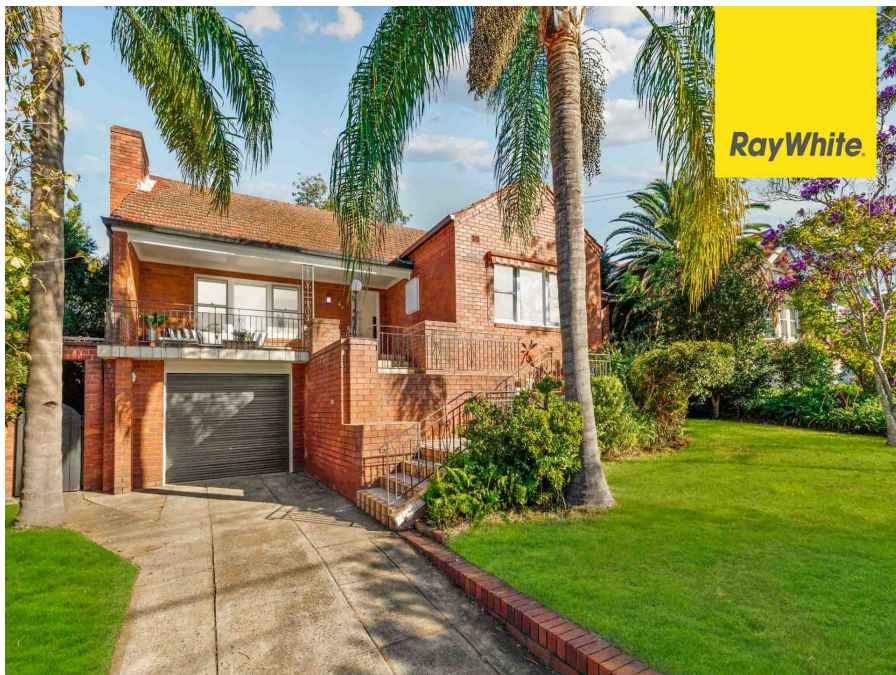


67 Ray Rd, Epping, NSW 2121

Sold - \$1,780,000

House 3  1  1 



Full brick family home at envious location!

With only minutes' walk to Epping CBD, shops and station and school, this 3 bedroom full brick home is poised at high side of street on a level 836sqm (appx) block with 18.3m frontage, offers great potential for families either moving straight in or renovating your dream home, well covered with elite schools including Epping Heights, Cheltenham Girls High and Epping Boys High.

- 3 generous sized bedrooms all with built-ins
- Spacious kitchen connected to separate dining and living areas
- Airy and light filled living and bedroom with high ceiling
- Newly updated easy maintenance timber floors throughout
- Lock-up garage with plenty under house storage
- Level 836sqm (appx.) block offers redevelopment potential (STCA)

Open for Inspection

By Appointment.

Listed By

Catherine Li

Phone: (02) 9876 3133

