

15/3-5 Norman St, Southport, QLD 4215

Sold - 18/06/2020

Unit 1  1  1 



SEABAY APARTMENTS ? SOUTHPORT

This large 1 bedroom apartment is located in the heart of Southport's CBD and is directly across the road from the magnificent Broadwater Parklands , offering you everything that is so special about living on the Gold Coast.

Open for Inspection

By Appointment.

Take advantage of this lifestyle!! Imagine waking up and being able to walk across the road and have a swim or a paddleboard on the Broadwater. Go for a fish, or just take a leisurely stroll along the kms of walking tracks.

Being in the heart of the CBD gives you access to Australia Fair, numerous restaurants and shops, pubs, clubs etc and the G-LINK is only a 5 minute walk.

The apartment is perfect for the owner occupier, or would make a wonderful addition to your investment portfolio.

For the owner, the unit is large, 61m2 internally! It is open plan and modern throughout.

For the investor, it offers outstanding position, low maintenance, excellent returns and a quality, modern complex.

The features include:

- 1 large bedroom with built in mirrored wardrobes
- 61m2 of living and 7m2 of balcony i.e. Total of 68m2
- 1 bathroom with sep toilet
- Separate laundry
- Modern, timber style kitchen with ample cupboard and benchspace. Stainless steel appliances including dishwasher
- Separate dining area
- Large balcony
- Security carparking with 1 carspace
- Airconditioned and ceiling fans.

The complex itself has:

On site management

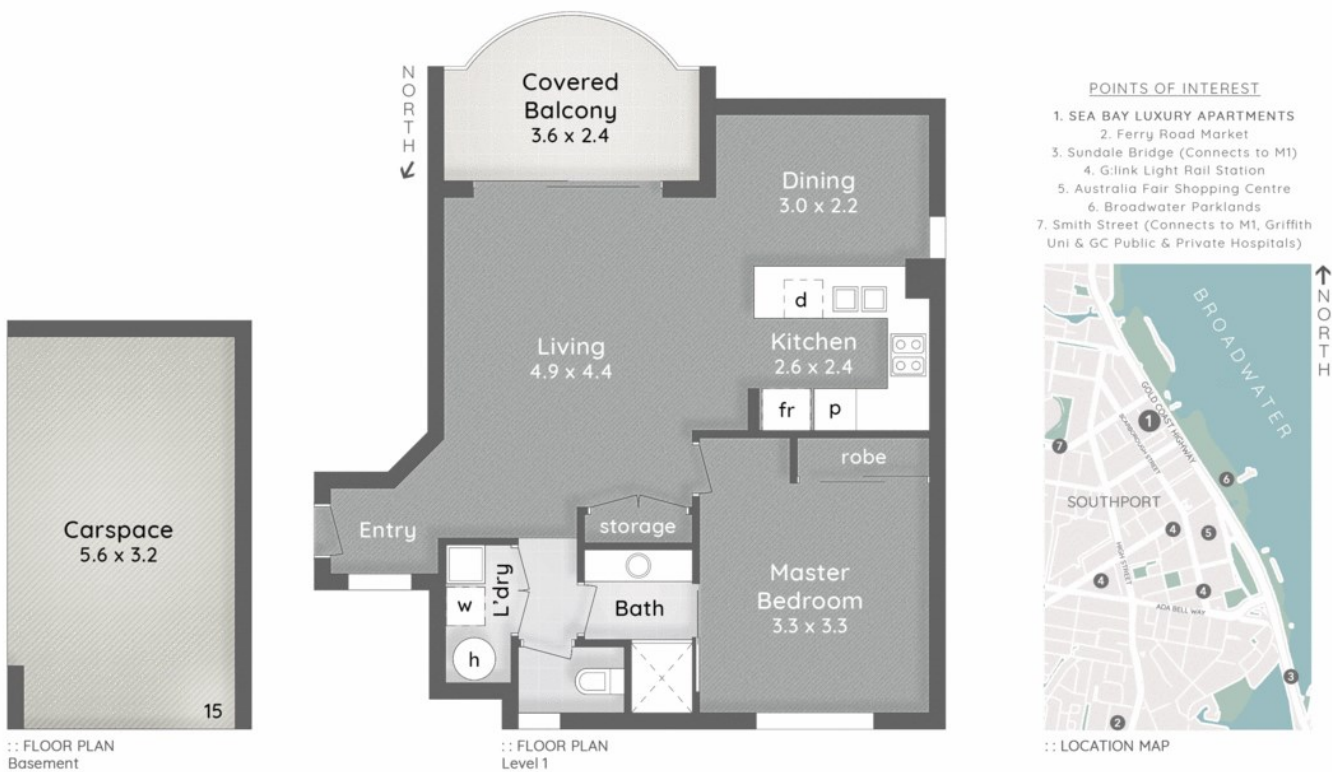
Listed By

Alex McCormack
Phone: (07) 5591 5222
Mobile: 0411 510 099

John McCormack
Phone: (07) 5591 5222
Mobile: 0411 879 468



Floorplan



SEA BAY LUXURY APARTMENTS 15/3-5 Norman Street SOUTHPORT

1 Bed 1 Bath 1 Car

LJ Hooker

Alex McCormack 0411 510 099
Ben Latimer 0402 921 314

Internal 61m² | Covered Balcony 7m² | Total 68m² or 7 Squares
Carspace 18m²

The overall presentation style, layout, imagery, fonts, background, colours and terminology are subject to strict copyright of Pure Design Concepts. No ownership is taken for building design. All measurements are approximate & individuals should rely on their own information. Find out more at puredesignconcepts.com.au

puredesign plans for purpose