

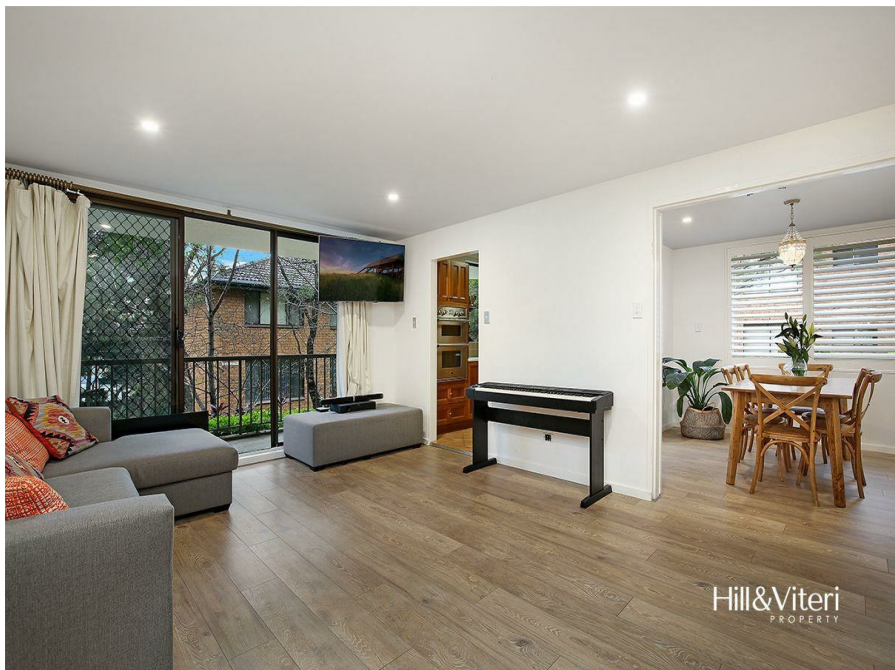



19/602 Princes Hwy, Kirrawee, NSW 2232

Sold - 12/06/2020

Apartment 2  1  2 

Northern Exposure - A Value Packed Property!

Note: Access via Flora Street

Boasting spacious, light filled interiors this full brick apartment with no common walls offers the size and space of it's three bedroom competitors. Set on an elevated ground floor with North, East & South aspects this property is blessed with excellent natural light and cross ventilation.

- Two queen size bedrooms, both with built-in robes
- Lounge + separate dining area that can be functioned as a study (or possible third bedroom)
- Updated bathroom with separate toilet + renovated laundry
- Timber kitchen with ample storage space + dishwasher
- Single lock up garage and separate car space in a secure basement
- North facing balcony covered balcony
- New flooring, paint and downlighting

Currently leased for \$460 per week (excluding the lock up garage) until 8th October 2020, it's perfect opportunity for an investor with no wait time to find a tenant or first home buyer who wishes to take advantage of rental income in the first instance.

Nestled in a beautifully maintained security complex and only moments to Kirrawee Shopping Village & South Village Precinct. This property presents a fantastic opportunity to buy in to an area that offers an array of amenities within a short walk.

Total lot size 123m² (87m² + 36m² parking)

Approximate quarterly outgoings

Strata: \$753.45

Council: \$342.20

Water: \$178

Listed By

Sebastian Viteri

The Office

Phone: (02) 9545 2220



Open for Inspection

By Appointment.