




10/260-270 Kingsway , Caringbah, NSW 2229

Sold - 15/06/2020

Townhouse 3  2  1 



Double Brick Home

We welcome you to enjoy the warmth and character this stunning double brick home located in the ever popular Kingsway Gardens complex has to offer. With entry via Yathong Road and located at the back of the complex in a whisper quiet location you will love coming home and embracing the peace and privacy this home provides for you and your family.

Open for Inspection

By Appointment.

Offering an ambience of easy living all bedrooms are well proportioned, sun filled and the main features an ensuite and walk in wardrobe

Intuitively designed the gourmet style kitchen boasts stone benches, stainless steel appliances and ample cupboard space.

Cleverly designed the home features open plan living and dining space and tiled bathrooms highlighting quality fixtures and fittings.

Once outside you will find manicured gardens and child friendly rear yard.

Additional features such as air conditioning, single car garage with workshop space, built ins to bedrooms, study nook, internal laundry with 3rd toilet and low maintenance yard make this townhouse very appealing.

Please make sure you enquires prompt as properties such as this seldom stay on the market for long.

We Love:

- Double brick home
- Whisper quiet location
- Sun filled interiors
- Newly renovated

Pluses:

Short walk to Caringbah CBD

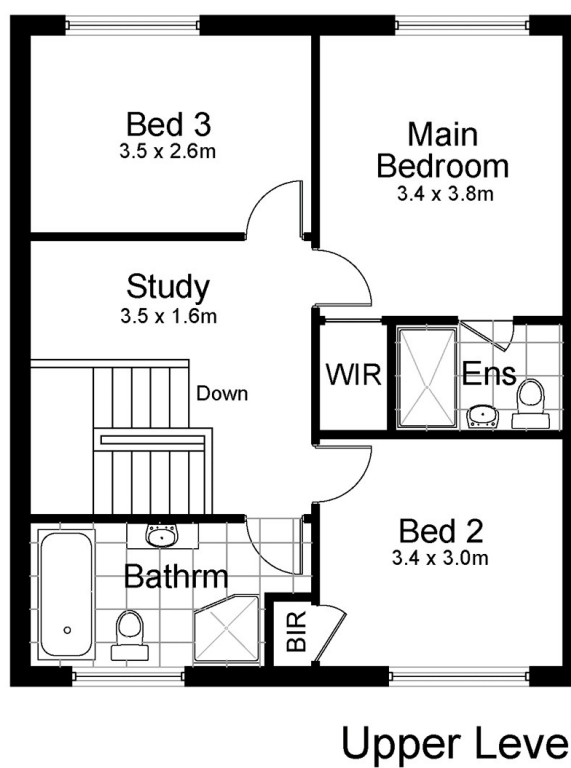
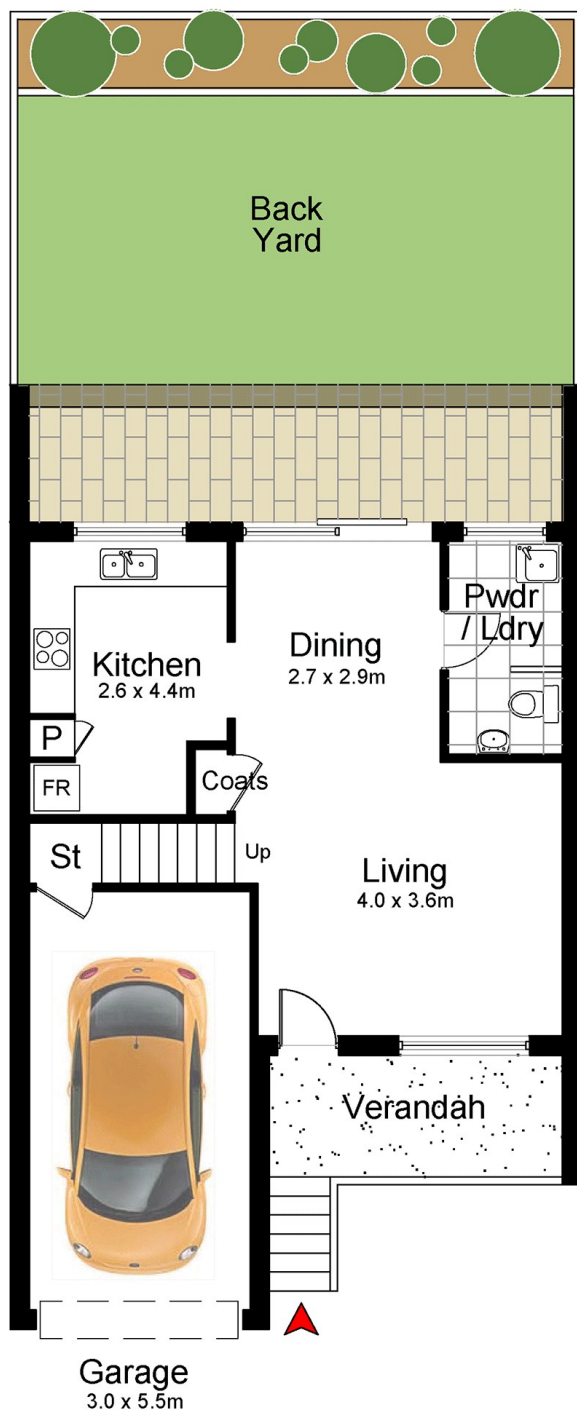
Listed By

Richard Tsotras

Phone: (02) 9524 0111



Floorplan



10/260-270 Kingsway, CARINGBAH

DISCLAIMER: All care has been taken in preparing this floor plan, however the accuracy is not guaranteed and no liability will be accepted for any reliance placed upon it.
Produced by SYDNEY MEDIA PROJECTS mob: 0414 697 215 email: sydneymediaprojects@gmail.com