

1 Eldena Pl, Parkinson, QLD 4115

Sold - 5/06/2020

House 4 2 3



SOLD BY JONATHAN WANG & LYNDA SIMPSON

This spacious four-bedroom brick lowset sits on a large, 800m2 corner block with dual-street access, and is within the prestigious Stretton State College catchment. Within a family-friendly neighbourhood, this home will impress with a 3kW solar system, three massive living areas, generously sized bedrooms and a lovely lush backyard with a huge garage shed (to house another car or boat).

Open for Inspection

By Appointment.

In a quiet and peaceful suburban pocket of Parkinson, on the corner of Balgownie Crescent and Eldena Place, this family home is surrounded by amenity. Only a short walk to Parkinson Duck Pond and Park, Parkinson Aquatic Centre and Avenues Early Learning Centre, and a quick five-minute drive to Stretton State College and six-minute drive to Calamvale Marketplace, this lowset is a fantastic home base for families.

Close to the Logan and Gateway motorways for quick access to the Gold Coast and Brisbane city, and within easy reach of the shopping and entertainment hubs of Browns Plains and Sunnybank, professionals and couples will also enjoy the proximity on offer from this spacious home.

Fully-fenced and private, only a neat tropical garden bed with a palm tree, wide paved driveway, double remote garage and quaint portico can be seen from the front of this brick and timber-accented home. The right of this façade is completely encased with timber fencing, with well-manicured hedging near the front door providing privacy beside the side gate access point.

Through the white timber front door, you'll be met with brand new parquetry floors, a wrap-around formal lounge and dining area off to the right. With air-conditioning, access to the pergola, and plenty of bright natural light, this gleaming space is perfect for hosting guests for dinner parties or tea and coffee catch-ups.

Further down the hallway from the entrance is an even larger open-plan living and dining area with a shelving unit off to the side, great for displaying knick-knacks, books or crockery. A large and open space overlooking the pergola outside, this is a fantastic area for family downtime, meals or further entertaining.

Down a hallway to the right from this large living space is the third and final living area. Ideal for creating your own media room, home office, games room or extra bedroom, this expansive living room is air-conditioned and features plenty of natural light, along with sliding door access to the backyard and shed, as well as access to the pergola. Along with the other two living spaces, this room creates a u-shape around the pergola area, creating a central entertaining and living zone.

The kitchen is neatly tucked away between the front two living areas, with a window looking out onto the pergola. With the same parquetry floors as the living

Listed By

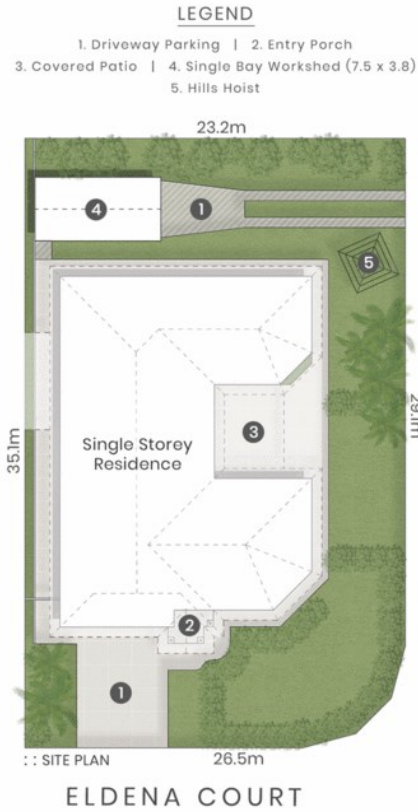
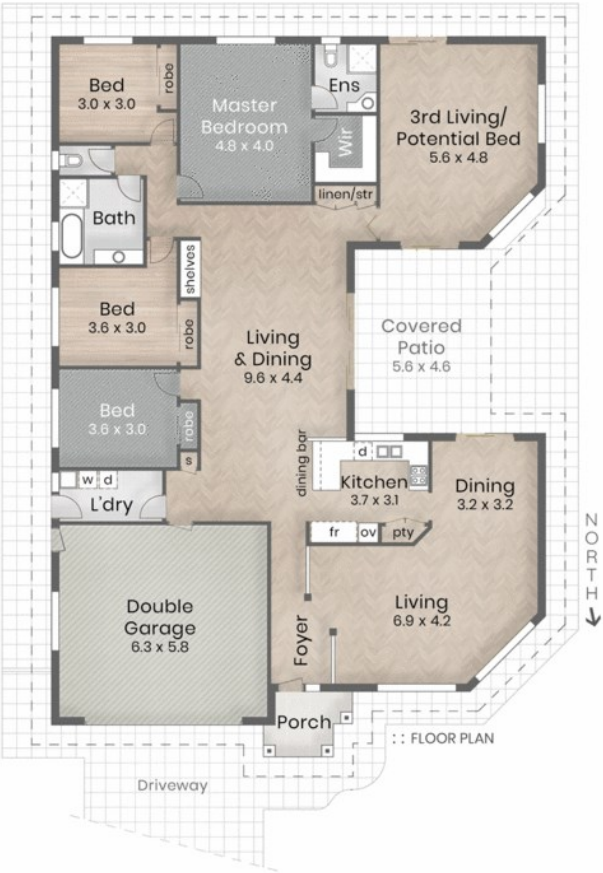
Jonathan Wang

Lynda Simpson

Phone: (07) 3344 0288



Floorplan



LJ Hooker

Sunnybank Hills

48 Balgownie Street

PARKINSON

800m²

4 Bed

2 Bath

2 Car + Off-Street

Internal 268m²

Patio & Porch 28m²

Total 296m² or 32 Squares

Workshed 29m²

puredesign

CONCEPTS

plans for
purpose—

The overall presentation style, layout, imagery, fonts, backgrounds, colours and terminology are subject to strict copyright of Pure Design Concepts. No ownership is taken for building design. All measurements are approximate & individuals should rely on their own information. Find out more at: puredesignconcepts.com.au